



## Champlain (Model 8302)

Gas-Fired Direct Vent Heater

### Owner's Manual

Operation & Installation Guide

### Read This Owner's Manual

Operate and Maintain This Gas Heater  
According to This Instruction Manual.

**Save These Instructions!**



**WARNING:** FOLLOW THE INFORMATION IN THESE INSTRUCTIONS EXACTLY, IF NOT, A FIRE OR EXPLOSION MAY RESULT CAUSING PROPERTY DAMAGE, PERSONAL INJURY OR LOSS OF LIFE.

**WARNING:** DO NOT STORE OR USE GASOLINE OR ANY OTHER FLAMMABLE VAPORS AND LIQUIDS NEAR THIS OR ANY OTHER GAS APPLIANCE.

#### WHAT TO DO IF YOU SMELL GAS:

- Do not try to light any appliance.
- Do not touch electrical switches; do not use the phone in your building.
- Immediately call your gas supplier from a phone outside the structure. Follow your gas supplier's instructions.
- If you cannot reach your gas supplier, call the fire department or 911.

A qualified installer, service agency, or gas supplier must perform installation and service of this appliance. In the Commonwealth of Massachusetts, all installation of gas lines and gas fittings must be performed by a licensed gas fitter or licensed plumber.

#### California Prop 65

**WARNING:** This product can expose you to chemicals including glass wool fiber and carbon monoxide which are known to the State of California to cause cancer, birth defects or other reproductive harm. For more information go to [www.P65Warnings.ca.gov](http://www.P65Warnings.ca.gov)

**AVERTISSEMENT:** ASSUREZ-VOUS DE BIEN SUIVRE LES INSTRUCTIONS DONNÉ DANS CETTE NOTICE POUR RÉDUIRE AU MINIMUM LE RISQUE D'INCENDIE OU POUR ÉVITER TOUT DOMMAGE MATÉRIEL, TOUTE BLESSURE OU LA MORT.

**AVERTISSEMENT:** NE PAS ENTRESPOSER NI UTILISER D'ESSENCE NI D'AUTRE VAPERURS OU LIQUIDES INFLAMMABLES DANS LE VOISINAGE DE CET APPAREIL OU DE TOUT AUTRE APPAREIL.

#### QUE FAIRE SI VOUS SENTEZ UNE ODEUR DE GAZ:

- Ne pas tenter d'allumer d'appareil.
- Ne touchez à aucun interrupteur. Ne pas vous servir des téléphones se trouvant dans le bâtiment où vous vous trouvez.
- Appelez immédiatement votre fournisseur de gaz depuis un voisin. Suivez les instructions du fournisseur.
- Si vous ne pouvez rejoindre le fournisseur de gaz, appelez le service des incendies.

L'installation et service doit être exécuté par un qualifié installer, agence de service ou le fournisseur de gaz.

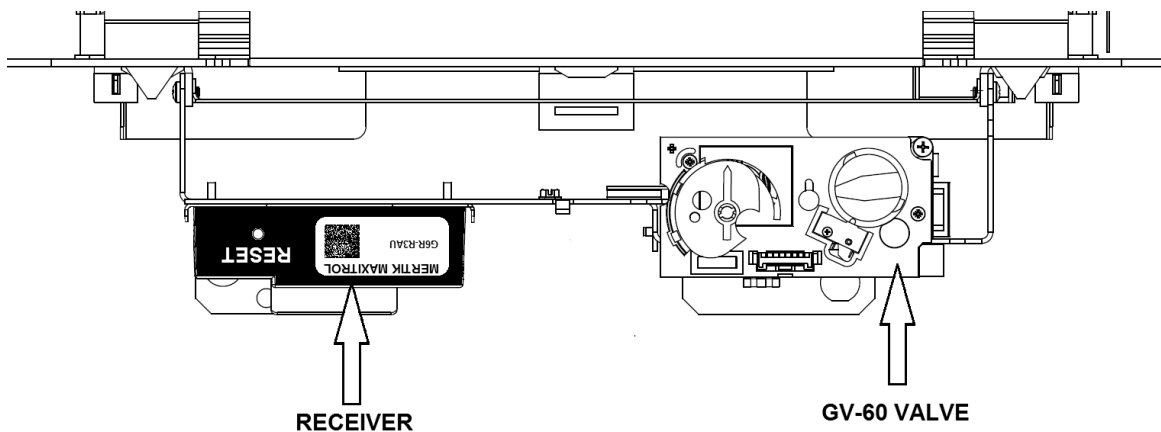
Champlain Model 8302  
Manual: 6400-40421  
R: 11-28-18

# INDEX

<b>Specifications</b> .....	<b>4</b>
<b>Introduction</b> .....	<b>5</b>
<b>Safety Information</b> .....	<b>5</b>
<b>Installation Preparation</b> .....	<b>8</b>
Codes.....	8
Items Required for Installation.....	8
Packing List.....	8
Unpacking and Inspection.....	8
<b>Clearances to Combustibles</b> .....	<b>9</b>
Hearth Requirement/Floor Protection.....	10
<b>Venting Information</b> .....	<b>11</b>
Venting Connection.....	11
Approved Systems.....	12
Minimum Venting.....	15
<b>Electrical System Information</b> .....	<b>17</b>
<b>Gas Supply &amp; Connections</b> .....	<b>18</b>
Gas Connections.....	19
Initial Leak Check.....	19
<b>Pre-Ignition Checks</b> .....	<b>19</b>
<b>Initial Lighting Instructions</b> .....	<b>21</b>
Remote Ignition Instructions.....	21
Manual Ignition Instructions.....	21
Pilot Adjustment.....	22
Outlet Pressure Adjustment.....	22
Minimum Flow Adjustment.....	22
LP Conversion.....	23
<b>Firebox/Log Set Placement</b> .....	<b>26</b>
Installation.....	27
Removal.....	28
Air Shutter.....	29
Restrictor.....	30
<b>Maxitrol GV60 Control System Features</b> .....	<b>30</b>
Sync Receiver to Remote/Starting the Appliance.....	31
Daily Operation.....	32
<b>Routine Maintenance and Care</b> .....	<b>38</b>
<b>Parts List</b> .....	<b>41</b>
<b>Troubleshooting</b> .....	<b>42</b>
<b>Rating Label</b> .....	<b>44</b>
<b>Warranty</b> .....	<b>45</b>

## NOTE ON BATTERY INSTALLATION IN RECEIVER

Please refer to pages 30 – 32 of this manual for operation of Maxitrol GV-60 gas control system. The following illustration is intended only to identify component location and receiver removal for installation of the 4 AA batteries included in your stove. **To install batteries in the receiver:** Remove control cover panel by firmly grasping front lip, lifting slightly and pulling forward free of the stove. Set panel aside on a soft surface. Locate and grasp receiver body. Pull receiver straight forward from the mounting bracket firmly but slowly. As soon as the receiver can be rotated free of the mounting clip, turn over counter-clockwise until battery cover can be accessed. Remove battery access cover, lay red ribbon across the battery tray and install supplied batteries as indicated in the receiver. Center the receiver in the mounting clip, reverse procedure to re-install receiver and follow receiver/remote sync procedure on page 31.



# Information Sheet

Use this page to record all relevant information concerning the purchase, installation, and maintenance of your Champlain Model 8302 Direct -Vent heater. This information will facilitate servicing, purchase of replacement parts, and warranty claims (if necessary). Keep your original receipt in a safe place as proof of purchase.

<b>Serial Number:</b>		
<b>Fuel type:</b>	Natural Gas	Liquid Propane
<b>Sold by:</b>		Date of Purchase:
Address:		
Phone:		
E-mail		Website:
<b>Installed by:</b>		Date of Installation:
Address:		
Phone:		
E-mail		Website:
<b>Gas Supplier:</b>		
Address:		
Phone:		
E-mail		Website:

Read this Owner's Manual before installing or operating your Champlain. Retain this manual for future reference.

## SERVICE RECORD

Date	Who Performed Work	Work Performed	Notes:

**WHAT**  
Firebox Cleaning.....  
Glass Cleaning.....  
Gaskets.....

**WHEN**  
annually  
as needed  
Replacement as needed

# SPECIFICATIONS

**Testing Agency:** Intertek Testing Services NA, Inc. (ITS)

**Listed:** Direct Vent Gas Heater

**Model:** Champlain Model 8302

**Tested to:** ANSI Z21.88 / CSA 2.33-2016

Certified for Canada, CSA P.4.1

Approved for Mobile Home Installation

**Certified for use by:**

Board of State Examiners of Plumbers and Gasfitters  
100 Cambridge Street, Room 1511  
Boston, Massachusetts 02202

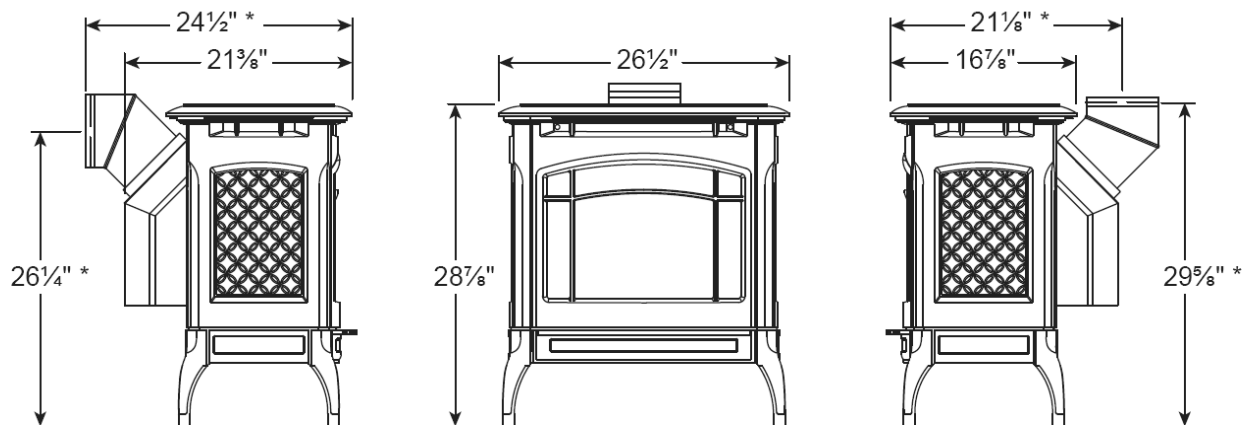
Manufactured and Warranted by:

**Hearthstone Quality Home Heating Products, Inc.**

317 Stafford Ave.

Morrisville, VT 05661-8695, USA

[www.hearthstonestoves.com](http://www.hearthstonestoves.com)



\*Shown with 45° elbow venting. Dimensions may vary depending on venting manufacturer.

**Figure 1 Champlain DV Dimensions**

Specification	NG	LP
Input rating (Btu/hr) 0-2000 ft	35,000	35,000
Input rating (Btu/hr) 2000-4500 ft	35,000	35,000
Orifice size DMS 0-2000 ft	32	51
Orifice size DMS 2000-4500 ft	32	51
Man. press.-LO setting (in.w.c./kPa)	1.2/0.3	4.3/1.07
Man. press.-HI setting (in.w.c./kPa)	3.4/0.87	10.0/2.48
Minimum Inlet press.(in.w.c./kPa)	5.0/1.25	12.0/2.99
Minimum input rating rating (Btu/hr)	21,000	23,000

# Introduction

Congratulations on your purchase of the Champlain Model 8302, Gas-Fired Direct-Vent heater. The Champlain, by Hearthstone, incorporates the latest in direct vent gas technology, which will provide you with clean, efficient heat for years to come. The enameled or painted cast iron gives the Champlain a pleasing look that is maintained with minimum care.

The Champlain will provide you with years of practical and convenient service. However, as with any gas appliance, the unit must be properly and safely installed and maintained by qualified service personnel to ensure safe and trouble-free operation.

## CHAMPLAIN MODEL 8302 FEATURES:

1. Maxitrol GV-60 Control System
2. 6-piece log set
3. Safety Barrier Screen
4. Platinum Bright Embers
5. Battery backup for functionality during power outages.
6. Optional blower

## CONTROL SYSTEM FEATURES:

1. Maxitrol GV-60 Control System:
  - Manual Mode:
    - a. Manual igniter
    - b. Adjustable flame height
    - c. Manual operation:
      - i. Flame level control knob
      - ii. Integrated piezoelectric igniter
2. Remote Control Mode:
  - a. Flame level control.
  - b. Manual, thermostatic, and two (2) programmable control modes.
  - c. The option to select on-demand or continuous pilot mode, based on control mode selected:
    - i. On-demand mode allows the most efficient use of gas, burning the pilot only when the control system calls for the burner to ignite.
    - ii. Programmable constant mode runs the pilot continuously keeping the firebox warmer thus promoting better draft in colder climates.
  - d. Battery level indicator for Transmitter on remote control

Part #	Description
8302-0010NP	Matte Black
8302-0020NP	Brown Enamel

### Read this Owner's Manual

Operate and maintain this gas heater according to the instructions in this manual. For your safety, and years of trouble free operation, read this manual in its entirety.

### Heater Must Be Installed and Maintained By Qualified Service Personnel

Verify the gas connections and venting systems meet the requirements of local, regional or national installation codes. Qualified service personnel must inspect the gas heater before use, and at least annually.

### Manufactured & warranted by:

Hearthstone Quality Home heating Products, Inc.  
317 Stafford Ave.

Morrisville, VT 05661


[www.hearthstonestoves.com](http://www.hearthstonestoves.com)

[inquiry@hearthstonestoves.com](mailto:inquiry@hearthstonestoves.com)

# SAFETY INFORMATION

**Your Champlain is an attractive and extremely efficient heater, utilizing today's best technologies. By following a few simple safety precautions and by performing minimal maintenance, the unit will remain appealing while providing years of quality performance.**

The installation must conform to local codes or, in the absence of local codes, the current National Fuel Gas Code, ANSI Z223.1 (NFPA 54) or CAN/CGA B149 Installation Code. (*Installer l'appareil selon les codes ou règlements locaux, ou, en l'absence de tels règlements, selon les Codes d'installation CAN/CGA B149.*)

** CAUTION: DO NOT USE THIS APPLIANCE IF ANY PART WAS UNDER WATER. IMMEDIATELY CALL A QUALIFIED SERVICE TECHNICIAN TO INSPECT THE HEATER AND TO REPLACE ANY PART OF THE CONTROL SYSTEM AND GAS CONTROL THAT HAS BEEN UNDER WATER. (NE PAS SE SERVIR DE CET APPAREIL S'IL A ÉTÉ PLONGÉ DANS L'EAU, COMPLÈTEMENT OU EN PARTIE. APPELER UN TECHNICIEN QUALIFIÉ POUR INSPECTER L'APPAREIL ET REMPLACER TOUTE PARTIE DU SYSTÈME DE CONTRÔLE ET TOUTE COMMANDE QUI ONT ÉTÉ PLONGES DANS L'EAU.)**

During the first few hours of operation the appliance may produce smoke and/or odor. This is normal during the first several burns and also after long periods when the stove is not burned. During these initial burns, open a window(s) to assist in the removal of the smoke/odor.

The appliance and its individual shutoff valve must be disconnected from the gas supply piping system during any pressure testing of that system at test pressures in excess of ½ psig. (3.5k Pa). The appliance must be isolated from the gas supply piping system by closing its individual manual shutoff valve during any pressure testing of the gas supply piping system at test pressures equal to or less than ½ psig (3.5k Pa).

### Fire Hazard

Do not store or use gasoline or other flammable vapors or liquids in the vicinity of this appliance. Locate the Champlain out of traffic areas and away from furniture, draperies, clothing, and flammable material.

### Vent Only to the Outside

Never vent the gas heater to other rooms or buildings.

### Service Caution

If you believe your Champlain is not, in any way, performing properly, immediately discontinue operation until the unit is inspected and approved by qualified service personnel. Prior to servicing the unit, turn the gas to the valve off, and disconnect any electrical source. Ensure the unit is cool prior to servicing and cleaning. Replace any safety screen, guard, or component removed during servicing prior to operation. Use of any components not supplied by Hearthstone on the stove voids all warranties. **Do not substitute components.**

### Proper Fuel

This gas heater is designed to burn natural gas (NG) or with conversion, liquid propane (LP). Never burn any fuel gas not intended for use with this unit. Never burn paper, wood, or other materials in this appliance.

This heater is factory equipped to burn natural gas (NG). To burn propane (LP), you must install the included LP conversion kit #93-56021

This appliance is only for use with the type(s) of gas indicated on the rating plate. This appliance is not convertible for use with other gases, unless a certified kit is used. *Cet appareil doit être utilisé uniquement avec les types de gas indiqués sur la*

*plaque signalétique. Ne pas l'utiliser avec d'autres gas sauf si un kited conversion certifié est installé. )*

- 🔥 **WARNING: THIS GAS APPLIANCE MUST NOT BE CONNECTED TO A CHIMNEY FLUE SERVING A SEPARATE GAS OR SOLID-FUEL BURNING APPLIANCE**
- 🔥 **WARNING: DO NOT OPERATE THE APPLIANCE WITH THE FRONT GLASS REMOVED, CRACKED, OR BROKEN. REPLACEMENT OF GLASS SHOULD BE DONE BY A LICENSED OR QUALIFIED SERVICE PERSON. ONLY OPEN FRONT FOR ROUTINE SERVICE. DO NOT SLAM FRONT OR STRIKE GLASS. USE MANUFACTURER-APPROVED FRONT GLASS ONLY.**
- 🔥 **WARNING: HEARTHSTONE RECOMMENDS THAT ONLY AN NFI CERTIFIED SERVICE TECHNICIAN INSTALLS, AND REPAIRS THIS APPLIANCE. A QUALIFIED SERVICE TECHNICIAN MUST INSPECT THE APPLIANCE BEFORE USE, AND AT LEAST ANNUALLY. MORE FREQUENT CLEANING MAY BE REQUIRED DUE TO EXCESSIVE LINT FROM CARPETING, BEDDING MATERIAL, PETS, ETC. IT IS IMPERATIVE THAT THE CONTROL COMPARTMENTS, BURNERS, AND CIRCULATING AIR PASSAGES OF THE APPLIANCE ARE KEPT CLEAN AND FREE OF OBSTRUCTIONS. (S'ASSURER QUE LE BRÛLEUR ET LE COMPARTIMENT DES COMMANDES SONT PROPRES. VOIR LES INSTRUCTIONS D'INSTALLATION ET D'UTILISATION QUI ACCOMPAGNENT L'APPAREIL.)**

### Hot Surfaces

Certain exposed surfaces of the Champlain will reach high temperatures during normal operation. Clearances to combustibles must be maintained, as specified in the "Clearances To Combustibles" section of this manual.

- 🔥 **DUE TO HIGH TEMPERATURES THE APPLIANCE SHOULD BE LOCATED OUT OF TRAFFIC AND AWAY FROM FURNITURE, DRAPERIES, CLOTHING AND FLAMMABLE MATERIALS. EN RAISON DES TEMPÉRATURES ÉLEVÉES, L'APPAREIL DEVRAIT ÊTRE INSTALLÉ DANS UN ENDROIT OÙ IL Y A PEU DE CIRCULATION ET LOIN DU MOBILIER ET DES TENTURES**
- 🔥 **CHILDREN AND ADULTS SHOULD BE ALERTED TO THE HAZARDS OF HIGH SURFACE TEMPERATURES AND SHOULD STAY AWAY TO AVOID BURNS TO SKIN OR CLOTHING IGNITION. LES ENFANTS ET LES ADULTES DEVRAIENT ÊTRE INFORMÉS DES DANGERS QUE POSENT LES TEMPÉRATURES DE SURFACE ÉLEVÉES ET SE TENIR À DISTANCE AFIN D'ÉVITER DES BRÛLURES OU QUE LEURS VÊTEMENTS NE S'ENFLAMMENT.**
- 🔥 **CAREFULLY SUPERVISE YOUNG CHILDREN WHEN THEY ARE IN THE SAME ROOM AS THE**

**APPLIANCE. TODDLERS, YOUNG CHILDREN, AND OTHERS MAY BE SUSCEPTIBLE TO ACCIDENTAL CONTACT BURNS. A PHYSICAL BARRIER IS RECOMMENDED IF THERE ARE AT RISK INDIVIDUALS IN THE HOUSE. TO RESTRICT ACCESS TO A FIREPLACE OR STOVE, INSTALL AN ADJUSTABLE SAFETY GATE TO KEEP TODDLERS, YOUNG CHILDREN, AND OTHER AT RISK INDIVIDUALS OUT OF THE ROOM AND AWAY FROM HOT SURFACES. LES JEUNES ENFANTS DEVRAIENT ÊTRE SURVEILLÉS ÉTROITEMENT LORSQU'ILS SE TROUVENT DANS LA MÊME PIÈCE QUE L'APPAREIL. LES TOUT PETITS, LES JEUNES ENFANTS OU LES ADULTES PEUVENT SUBIR DES BRÛLURES S'ILS VIENNENT EN CONTACT AVEC LA SURFACE CHAUDE. IL EST RECOMMANDÉ D'INSTALLER UNE BARRIÈRE PHYSIQUE SI DES PERSONNES À RISQUES HABITENT LA MAISON. POUR EMPÊCHER L'ACCÈS À UN FOYER OU À UN POËLE, INSTALLEZ UNE BARRIÈRE DE SÉCURITÉ; CETTE MESURE EMPÊCHERA LES TOUT PETITS, LES JEUNES ENFANTS ET TOUTE AUTRE PERSONNE À RISQUE D'AVOIR ACCÈS À LA PIÈCE ET AUX SURFACES CHAUDES.**

- ☛ CLOTHING OR OTHER FLAMMABLE MATERIAL SHOULD NOT BE PLACED ON OR NEAR THE APPLIANCE. *ON NE DEVRAIT PAS PLACER DE VÊTEMENTS NI D'AUTRES MATIÈRES INFLAMMABLES SUR L'APPAREIL NI À PROXIMITÉ.*
- ☛ CLEAN THE AREA AROUND, UNDER, AND BEHIND THE UNIT ON A REGULAR BASIS TO PREVENT THE ACCUMULATION OF DUST AND LINT.

**Ceramic Logs, Burner, & Baffle**

If the decorative ceramic log or burner material supplied with the Champlain is damaged or parts are missing, they must be replaced with the same, or approved Hearthstone replacement parts. These

components affect the combustion quality and safety of the heater. Do not replace ceramic logs, the burner, or baffle with unapproved ceramic components or any other material. We recommend you always wear gloves and safety goggles while handling the ceramic log set and burner materials.

**Electrical Hazard**

For your protection against shock hazard, any three-prong grounding plug, if present, must be plugged directly into a properly grounded three-prong receptacle. Do not cut or remove the grounding prong from any plug or otherwise attempt to circumvent the grounding protection provided with the unit. The Stowe must be electrically grounded in accordance with local codes, or in the absence of local codes, with the National Electrical Code, ANSI/NFPA 70 in the U.S. or CSA C22.1 Canadian Electrical Code in Canada.

**Do Not Light Pilot or Burner by Hand**

The pilot light on this gas heater is lit by using the remote control as described elsewhere in this manual. Never attempt to light the pilot or main burner by hand with a match or lighter.

**Mobile Home Installations**

This appliance may be installed in an aftermarket permanently located, manufactured home (USA only), where not prohibited by local codes.

This appliance is only for use with the type of gas indicated on the rating plate. This appliance is not convertible for use with other gasses, unless a certified kit is used.

DANGER

**HOT GLASS WILL CAUSE BURNS.**

**DO NOT TOUCH GLASS UNTIL COOLED.**

**NEVER ALLOW CHILDREN TO TOUCH GLASS.**

A barrier designed to reduce the risk of burns from the hot viewing glass is provided with this appliance and shall be installed for the protection of children and other at-risk individuals.

DANGER

**UNE VITRE CHAUDE PEUT CAUSER DES BRÛLURES.**

**NE PAS TOUCHER UNE VITRE AVANT QU'ELLE NE REFROIDISSE.**

**NE JAMAIS LAISSER UN ENFANT TOUCHER À LA VITRE.**

Une barrière de sécurité est recommandée pour aréduire les risques de brûlures causées par le vitre chaude de cet appareil et doit être installée pour la protection des enfants et d'autres personnes à risque.



# Installation Preparation

## CODES

Adhere to **all local codes** or, in their absence, the latest edition of THE NATIONAL FUEL GAS CODE ANSI Z223.1 (NFPA 54) or CAN/CGA B149 (*Installer l'appareil selon les codes ou règlements locaux, ou, en l'absence de tels règlements, selon les Codes d'installation CAN/CGA-B149.*)

Installation Codes can be obtained from:

### AMERICAN NATIONAL STANDARDS INSTITUTE, INC.

1430 BROADWAY  
NEW YORK, NY 10018  
www.ansi.org

### NATIONAL FIRE PROTECTION ASSOCIATION, INC.

BATTERY MARCH PARK  
QUINCY, MA 02269  
www.nfpa.org

The appliance when installed must be electrically connected and grounded in accordance with local codes or, in the absence of local codes, with the current NFPA 70-National Electrical Code or CSA C22.1-Canadian Electric Code.

A manufactured home (mobile) OEM installation must conform to the Manufactured Home Construction and Safety Standard, Title 24 CFR, Part 3280 (U.S.) or Standard for Manufactured Home Installation, ANSI/NCBCS A225.1 or Standard for Gas Equipped Recreational Vehicles and mobile Housing, CSA Z240.4.CAN/SCA Z240 MH (Canada). This appliance is only for use with the type(s) of gas indicated on the rating plate. *Cet appareil peut être installé comme du matériel d'origine dans une maison préfabriquée (É.-U. seulement) ou mobile et doit être installé selon les instructions du fabricant et conformément à la norme Manufactured Home Construction and Safety*

*Standard, Title 24 CFR, Part 3280 aux États-Unis ou à la norme CAN/CSA-Z240 Série MM, Maisons mobiles au Canada. Cet appareil doit être utilisé uniquement avec les types de gaz indiqués sur la plaque signalétique.*

This appliance is equipped for use at 0 to 2000 feet (0-610 meters) altitude. (*Cet appareil est équipé pour des altitudes comprises entre 0 et 2000 pieds (0-610 m) seulement.*)

## Items Required for Installation

- 🔧 External regulator (for propane (LP) only)
- 🔧 LP conversion kit (for propane only)
- 🔧 Piping which complies with local codes

- 🔧 Pipe sealant approved for use with propane (LP) (resistant to sulfur compounds).
- 🔧 Manual shutoff valve
- 🔧 Sediment trap (see page 20)
- 🔧 Pipe wrench
- 🔧 Phillips head screwdriver
- 🔧 7/16-inch wrench
- 🔧 5/23" (4mm) allen wrench
- 🔧 Other parts as required by local code
- 🔧 Safety Glasses
- 🔧 Gloves

## Packing List

- 1- Champlain 8302 Gas-Fired Heater
- 1- Pan Burner
- 1- Owner's Packet (manual, warranty card)
- 1- LP Conversion Kit
- 6- Decorative Ceramic Logs (in separate box)
- 1- Bag of Platinum Bright Embers

- 🔧 Note: Vent kits and components are supplied separately. Failure to use the venting components approved by Hearthstone for this appliance will void your warranty.

## Unpacking and Inspection

Hearthstone packages your Champlain to withstand normal shipment without damage. However, damage can still occur during transit. Take care to inspect for damage when unpacking and installing the unit.

- 🔧 **DO NOT INSTALL, OR PUT INTO SERVICE, A DAMAGED OR INCOMPLETE HEATER.**

Remove the shrink-wrap and other packaging materials taking care not to damage the stove's finish. Inspect the Champlain for visible or concealed damage. The unit should be square and true. The sheet metal parts should be smooth and free of bends and dents. Any enameled cast iron should be free of chips or cracks. If visible or concealed damage is found or suspected, contact your dealer for instructions.

Always use gloves and eye protection when handling the decorative ceramic fire logs and burner. Use care when handling these parts as they are fragile and subject to damage and breakage if handled roughly.

See the firebox access instructions on page 9. Unpack and inspect the logs for damage. Inspect the metal burner as well. Open the other boxes and inspect the components. If log, burner or any other component damage is encountered, contact your dealer for a replacement. Otherwise, set the logs

and other components aside until called for during the installation.

### Dismounting from Pallet

With the accessory boxes removed and set aside, remove the four lag screws that fasten the unit to the pallet. Take care not to mar or chip the stove's finish.

Have someone help lift the stove off the pallet, taking care to avoid damaging components mounted under the stove.

**INSTALLER:** Leave this manual with the appliance.

**INSTALLATEUR :** *Laissez cette notice avec l'appareil.*

**CONSUMER:** Retain this manual for future reference.

**CONSOMMATEUR :** *Conservez cette notice pour consultation ultérieure*

### Firebox Access

1. Remove top of the stove (lift off). Set carefully aside on a soft surface.



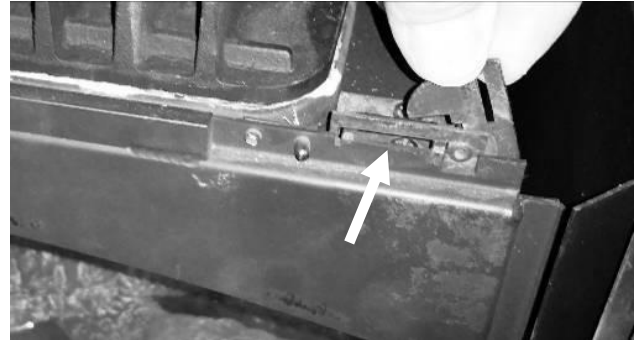
**Figure 2 –Top Removal**

2. Release the front panel by lifting up and off of the stove body. Set aside on a soft surface.



**Figure 3 – Front Panel Removal**

3. Remove glass by rotating retention clips up until clear of the clip slot. Lean the glass away from the firebox at the top and pick straight up off of the stove.



**Figure 4 – Glass Removal**

4. Reinstall by reversing the previous steps.

### Clearances to Combustibles

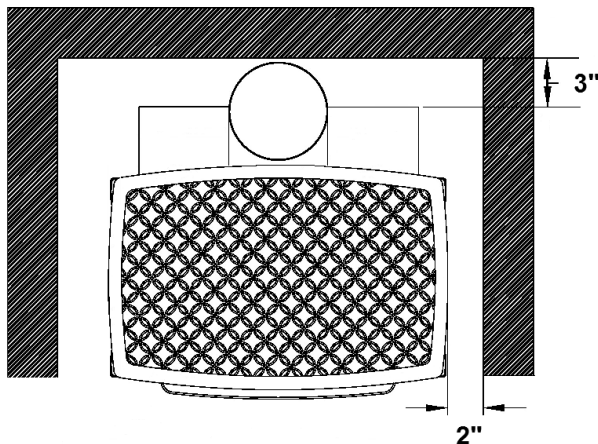
- 🔥 Note: Ensure clearances are in accordance with local installation codes and the requirements of the gas supplier. *Dégagement conforme aux codes d'installation locaux et aux exigences du fournisseur de gaz.*
- 🔥 Due to high surface temperatures, locate the unit out of traffic areas and away from furniture and draperies. Do not place clothing and other flammable material on or near the heater. When positioning the unit always maintain adequate clearances around air openings into the combustion chamber and allow for adequate ventilation. Minimum clearances to combustibles must be maintained as shown in Figures 5 - 8.

**Note:** The rear clearance to combustibles is determined by either the unit's or the vent pipe's minimum clearance, depending on whether the installation calls for vertical rise within the room or a rear exit, through-the-wall vent pipe. Ensure you consider the need for access to the gas control valve access door on the front of the unit as well as full access for periodic cleaning and servicing. Also consider clearance for the blower assembly if present, or planned in the future

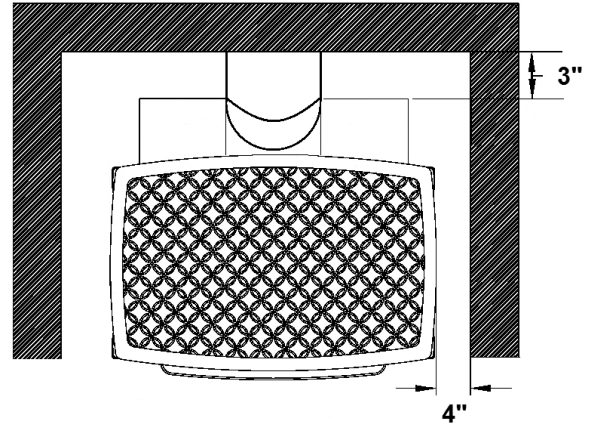
**CAUTION:** THESE CLEARANCES REPRESENT *MINIMUM* DISTANCES IN ALL CASES, WHICH, THROUGH TESTING IN AN INDEPENDENT LABORATORY TO ANSI AND CSA STANDARDS, WILL PREVENT FIRE OR SPONTANEOUS COMBUSTION. WE DO NOT CONTROL THE COMBUSTIBLE MATERIALS EXPOSED TO HEAT BY THIS PRODUCT; THEREFORE, AN ASSESSMENT MUST BE MADE BY THE INSTALLER TO PREVENT CONSEQUENTIAL DAMAGE OF WALLS AND FLOORING.

## Hearth Requirement/Floor Protection

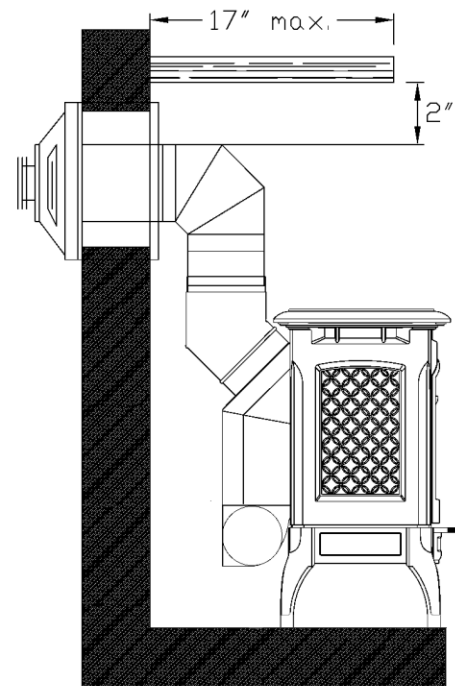
You can place the Champlain directly on any non-combustible surface or on a wood floor. When placing the Stowe on any other type of combustible surface you must install a panel made of metal, wood, stone, or glass under the appliance. The panel must extend the full width and depth of the appliance. Installations must meet all local codes.



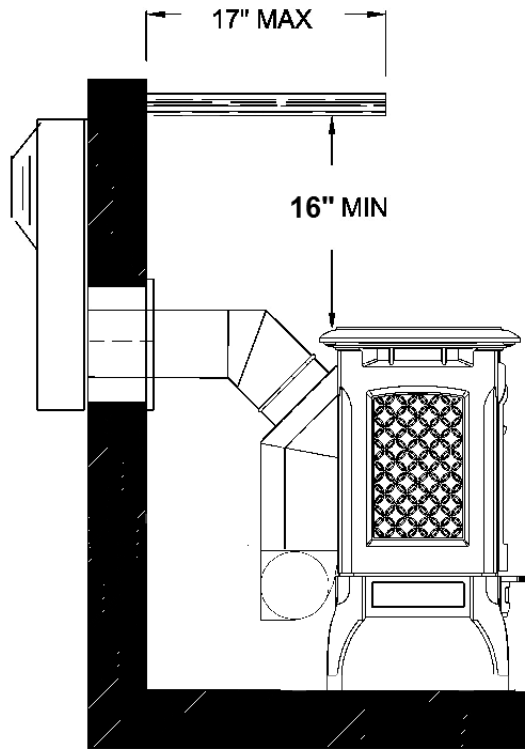
**Figure 5 - Minimum Wall Clearances  
Horizontal Vent**



**Figure 6 - Minimum Snorkel Wall Clearances**



**Figure 7 - Horizontal Vent Mantle Clearance**



**Figure 8 - Snorkel Termination Mantle Clearance**

The corner clearance for the Champlain 8302 is 4", measured from the edge of the firebox to the adjacent wall.

## Venting Components & Configuration

Do not vent the Champlain jointly with any other solid fuel or gas appliance. Vent the stove directly to the outside of the building using a proper termination as listed in this manual. The only types of venting pipe approved for use with your Champlain Direct-Vent stove are those listed in this manual. The venting configuration diagram is shown in *Figures 9 - 13*. After determining the proper venting configuration for your stove, select the vent system that will accommodate your installation.

**CAUTION: ENSURE NO WIRING OR PLUMBING IS IN THE CHOSEN LOCATION.**

**CAUTION: DO NOT RECESS VENTING TERMINATIONS INTO A WALL OR SIDING.**

**Note:** If you need further direction for installation, please refer to the venting instructions provided with the venting components.

### Vent Connection

The Champlain Direct Vent Model 8302 is approved for installation only with the vent connecting components listed in this manual. Use the following instructions along with the pipe manufacturer's instructions to complete the installation.

The starter collar is factory installed. Install the rest of the vent system according to the manufacturer's instructions.

### Specified Venting Manufacturers

This heater is approved for installation only with the venting components provided by manufacturers listed on this page.

Simpson Dura-Vent, Inc.  
P.O. Box 1510  
Vacaville, CA 95696-1510 800-835-4429

American Metal Products (*AmeriVent*)  
8601 Hacks Cross Rd.  
Olive Branch, MS 38654 800-423-4270

Selkirk Corporation  
1301 W. President George Bush Hwy, Suite 330  
Richardson, TX 75080-1139 800-992-8368

Security Chimneys International Ltd (*Secure Vent*)  
2125 Monterey, Laval, Quebec  
Canada, H7L 3T6 450-973-9999

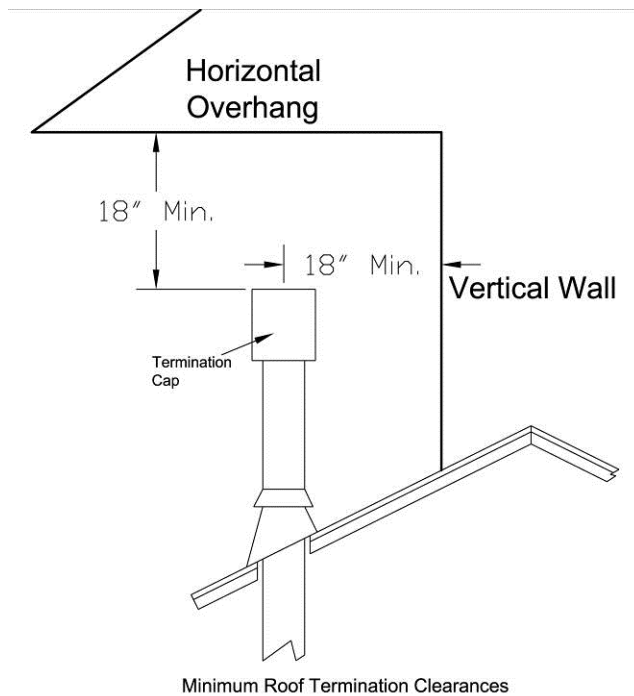
ICC, Inc.  
400 J-F Kennedy, St. Jerome, Quebec  
Canada, J7Y 4B7 450-565-6336

Metal-Fab, Inc.  
P.O. Box 1138  
Wichita, Kansas 67201 316-943-2351

### Acceptable Direct-Vent Termination Cap Roof Locations

The vent/air intake termination clearances above the high side of an angled roof as follows:

Roof Pitch	Feet	Meters
Flat to 6/12	1	0.3
7/12 to 9/12	2	0.6
10/12 to 12/12	4	1.2
13/12 to 16/12	6	1.8
17/12 to 21/12	8	2.4



**Figure 9:** Termination Cap clearances

## Approved Venting System Components

(The following are components that are available, BUT NOT necessary for all installations)

90° Elbow	Vertical Vent Cap
45° Elbow	36" Snorkel
6" Straight	Vinyl Siding Standoff 4" x 6 5/8"
9" Straight (Simpson only)	
12" Straight	Round Ceiling Support
24" Straight	Thimble Covers
36" Straight	Wall thimble
48" Straight	Horizontal Vent Cap
11"-14 5/8" Adjustable Pipe	

## Chimney Liner System

### Direct-Vent Chimney Liner Termination Kit

Chimney Liner Flex

Co-Linear Flex Connector

Axial to Co-Linear Appliance Connect (Masonry approved, not to exceed 16' measured from stove top).

- 🔥 **IF THE VENT SYSTEM IS DISASSEMBLED FOR ANY REASON, IT MUST BE REINSTALLED PER THE INSTRUCTIONS PROVIDED FOR IN THE INITIAL INSTALLATION OR IN THIS MANUAL.**

## Vent Configuration Options

### I. STANDARD HORIZONTAL INSTALLATION

#### Kit #93-65000

- 🔥 **Note:** Install the 45° elbow over the outer collar. Place the elbow so that the twist lock end is pointing straight up. Install the 2' pipe section into this elbow by fully inserting it, and turning approximately ¼ turn clockwise until the two sections are fully locked. Install the 90° elbow in similar fashion with the opening pointing to the rear.

- 🔥 **Note:** Ensure there is no wiring or plumbing in the chosen wall location.

Move the stove and pipe assembly back until the 90° elbow is flush to the wall. Ensure the 2' vertical pipe is still parallel to the wall. Draw a circle around the pipe where it touches the wall. Use the center of this circle as the center point of the 10" x 10" square wall pass through.

Cut and frame the wall for the vent pipe. Install the horizontal vent termination on the outside of the wall. Ensure both of the retaining straps extend through the wall pass through to the inside of the wall.

Before attaching the vent termination to the outside of the house, run a bead of non-hardening mastic around the outside edges, between the vent termination and the wall. The arrow on the end cap should point up. Secure the cap to the wall with the appropriate screws.

Put the adjustable (11"-14") pipe into the horizontal vent cap, (the vent pipe must extend into the horizontal vent cap a minimum of 1 ¼"). Move the stove and vent pipe into position, insert the adjustable (11"-14") pipe into the 90° elbow, twist lock it.

Secure the straps from the horizontal vent termination to the interior pipe with two sheet metal screws, keeping the screws as close to the wall thimble as possible. Bend or cut the excess strapping so the thimble cover will fit properly. Screw the thimble cover to the wall.

- 🔥 **The adjustment range for wall thickness for this configuration is 3" min to 9" max.**

### II. FIREPLACE VENTING INSTALLATIONS

- 40' maximum system height (without offsets)
- 14' maximum offset (refer to Figures 10 - 11)

- Maximum rise to run = 1 to 5 (refer to Figures 10 -13)
- The termination must meet the requirements outlined in Figures 7- 9.

<p>Champlain Vertical Venting Using:</p> <ul style="list-style-type: none"> <li>- A Chimney as an Air Inlet Adaptor</li> <li>- A Co-linear Adaptor</li> <li>- A Co-axial Adaptor</li> </ul>	
V (FT)	H (FT)
10' MIN. _____	1.5' MAX.
40' MAX. _____	1.5' MAX.
$H1 + H2 = H$ (FT)	
<p><math>V + H =</math> MAXIMUM ALLOWABLE VENT LENGTH                  FOR CORRECT DRAFT, HORIZONTAL VENTING MUST RISE 1/4" - 1/2" PER FOOT OF RUN.                  RESTRICTOR PLATE IN POSITION (1) FULLY OPEN                  DO NOT INCLUDE EXIT ADAPTER AS AN ELBOW.</p>	

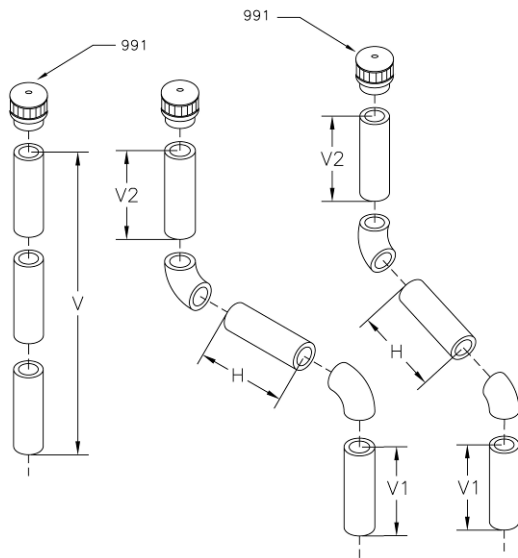
**Figure 10: Vertical Venting Rules**

**IV. HORIZONTAL TERMINATION VENTING CONFIGURATIONS**

- A minimum of 24" rise is required (with or w/o offsets)
- 40' maximum system height (without offsets)
- Maximum rise to run = 1 to 5
- The termination must meet the requirements outlined in Figures 7 - 9. Use a vinyl siding stand off when installing against vinyl siding.
- Horizontal sections require a 1/4" rise every 12" of horizontal run.
- For each 90° elbow after the second, remove 5' from horizontal run.
- Use with snorkel termination 45" maximum horizontal run

**III. Vertical Termination Venting Configurations**

-40' maximum system height (without offset)



**Figure 11: Approved DV Vertical Co-Axial Termination Configurations**

CHAMPLAIN VERTICAL VENTING USING: -A CHIMNEY AS AIR INLET ADAPTER -A CO-LINEAR ADAPTER -CO-AXIAL ADAPTER	
<u>V (FT)</u>	<u>H (FT)</u>
10' MIN. — — — — 1.5' MAX.	1.5' MAX.
30' MAX. — — — — 1.5' MAX.	1.5' MAX.
$H1 + H2 = H \text{ (FT)}$ $V + H = \text{MAXIMUM ALLOWABLE VENT LENGTH}$	
FOR CORRECT DRAFT, HORIZONTAL VENTING MUST RISE 1/4" - 1/2" PER FOOT OF RUN.	
DO NOT INCLUDE EXIT ADAPTER AS AN ELBOW.	

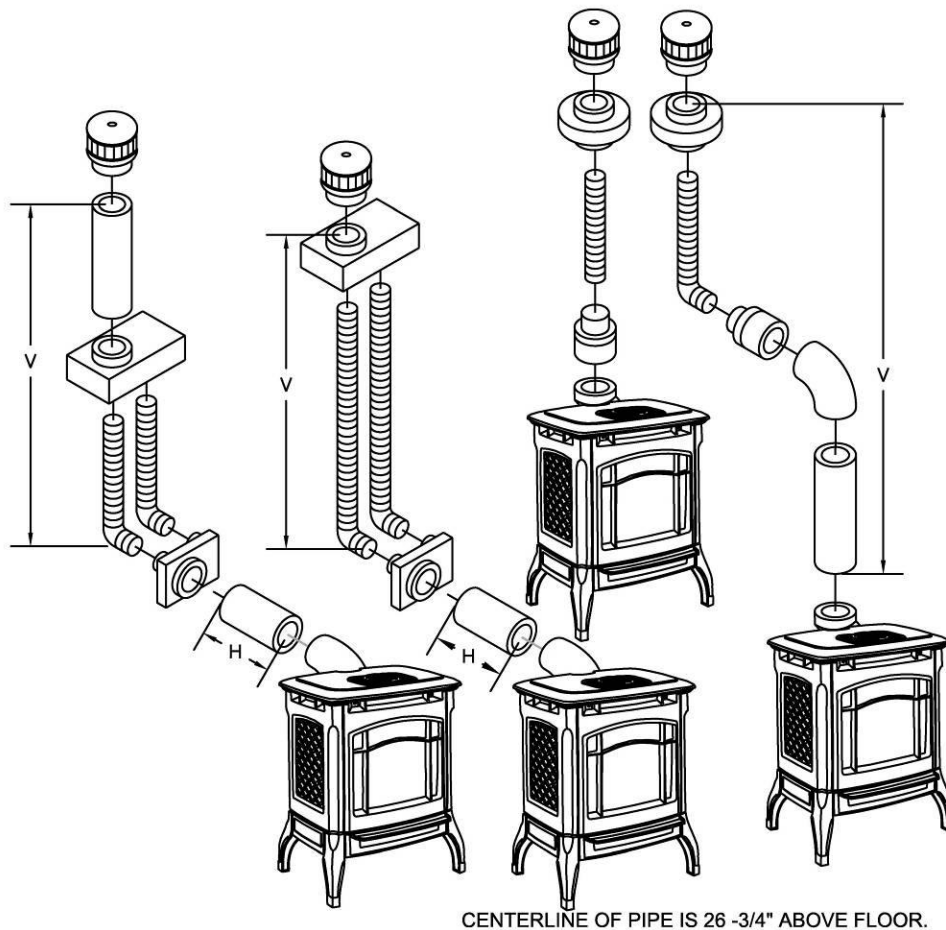
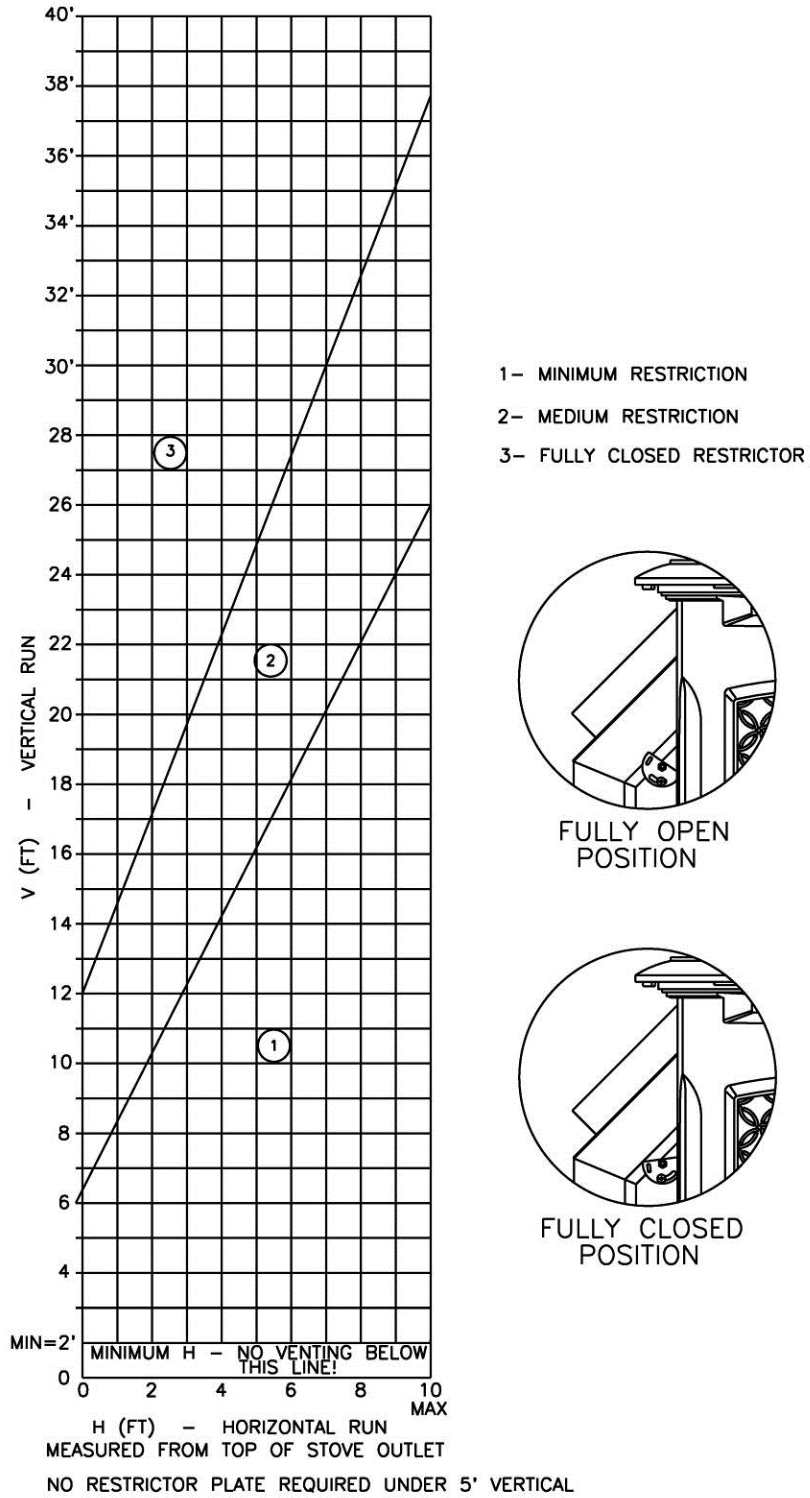


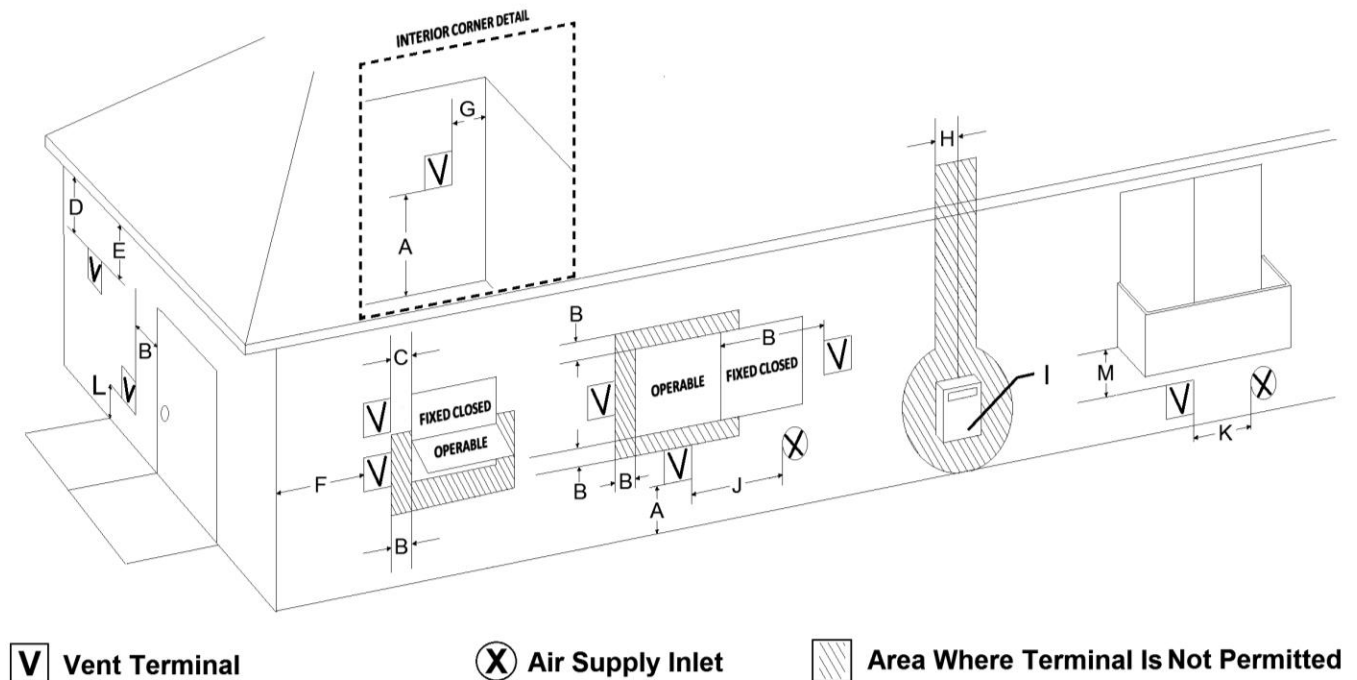
Figure 12: Approved DV Venting Alternate Configurations for Vertical Termination



**Figure 13: Venting Configuration and Restrictor Settings\***

\* To adjust your restrictor for optimum flame appearance, follow the instructions in Restrictor Plate, p.30





**Figure 14 - Acceptable Direct Vent Terminal Vent Cap Locations**

A = Clearance above grade, veranda, porch, deck, or balcony: 12 inches (30cm) minimum.

B = Clearance to window or door that may be opened: \*\*Min. 9 inches U.S./12 inches (30cm) CAN. We recommend 12 in, minimum to prevent condensation on the window.

C = Clearance to permanently closed window: \*\*Min. 9 inches, U.S./12 inches (30cm) CAN.

We recommend 12 in. minimum to prevent condensation on the window.

D = Vertical clearance to ventilated soffit located above the termination within a horizontal distance of 2 feet (60cm) from the center line of the termination: 18 inches (46cm) minimum.

E = Clearances to unventilated soffit: 12 inches (30cm) minimum.

F = Clearance to outside corner: \*\*Min. 9 inches, U.S./12 inches (30cm) CAN. We strongly recommend 12 inches, particularly where windy conditions prevail.

G = Clearance to inside corner: \*\*Min. 6 inches, U.S./12 inches (30cm) CAN. We strongly recommend 12 inches, particularly where strong winds prevail.

H = \*Not to be installed within 15 feet (4.5m) above a meter/regulator assembly within 3 feet (91cm) horizontally from the center line of the regulator.

I = Clearance to service regulator vent: 3 feet (91cm)

J = Clearance to non-mechanical air supply inlet to building or the combustion air inlet to any other appliance: 12inches (30cm) minimum.

K = Clearance to a mechanical air supply inlet: \*\*Min. 3 feet (91cm) above if within 10 feet horizontally, U.S./6 feet (1.83m) CAN minimum.

L = <sup>1</sup>Clearance above paved sidewalk or a paved driveway located on public property: 7 feet (2.1m) minimum.

M = <sup>2</sup>Clearance under veranda, porch, deck, or balcony: 12 inches (30cm) minimum.

*\*In accordance with CSA B149 Installation codes.*

*\*\*In accordance with the current ANSI Z223.1/NFPA 54, National Fuel Gas Code. Note: Local Codes and Regulations may require different clearances.*

*<sup>1</sup>A vent shall not terminate directly above a sidewalk or driveway which is located between two single family dwellings and serves both dwellings*

*<sup>2</sup>Only permitted if veranda, porch, deck or balcony, is fully open on a minimum of two sides beneath the floor.\**

# ELECTRICAL SYSTEM INFORMATION

**CAUTION: LABEL ALL WIRES PRIOR TO DISCONNECTION WHEN SERVICING CONTROLS. WIRING ERRORS CAN CAUSE IMPROPER AND DANGEROUS OPERATION. VERIFY PROPER OPERATION AFTER SERVICING. (ATTENTION: AU MOMENT DE L'ENTRETIEN DES COMMANDES, ÉTIQUETEZ TOUS LES FILS AVANT LE DÉBRANCHEMENT. DES ERREURS DE CÂBLAGE PEUVENT ENTRAÎNER UN FONCTIONNEMENT INADEQUATE ET DANGEREUX.)**

The proper location of wire connections is shown in the following figure.

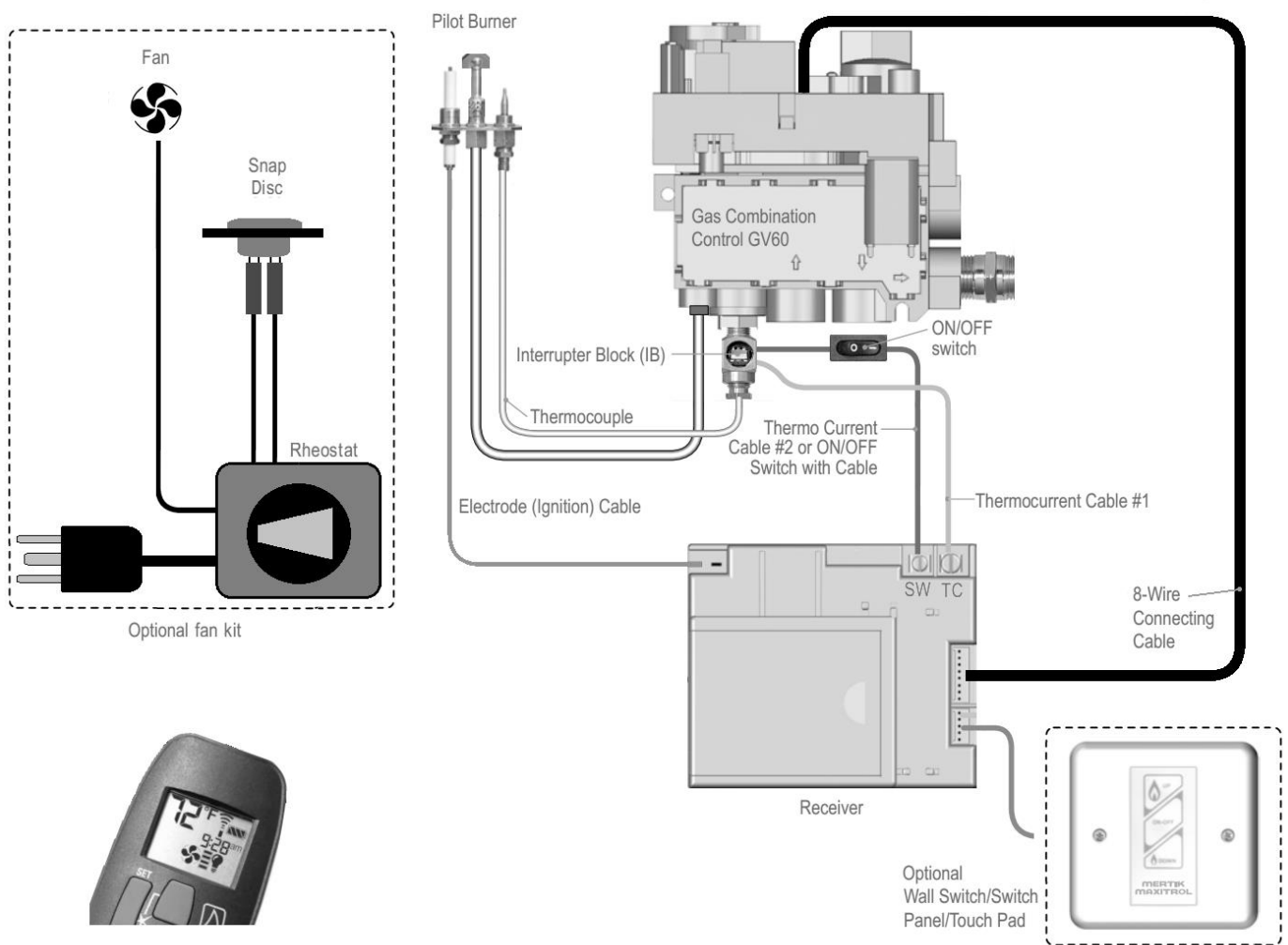


Figure 15 – Champlain 8302 Wiring Diagram

## Gas Supply & Connections

### Connection Location

The gas supply connection is made to the Champlain's gas control valve under the bottom right center of the unit using a 3/8" male NPT fitting. The supply line should be 1/2" diameter, or appropriately sized to provide a sufficient gas supply to meet the maximum demand of the unit without undue loss of pressure. We recommend a flexible line to avoid undue mechanical load on the valve and to ease thread alignment, but refer to local codes.

The Champlain is factory equipped to use natural gas (NG) and requires conversion for use with propane (LP). A propane (LP) fuel conversion kit is included with your stove purchase.

### Gas Supply

This appliance and its individual shutoff valve must be disconnected from the gas supply piping system during any pressure testing of that system at test pressures in excess of 1/2 psig. The Champlain must be isolated from the gas supply piping system by closing its individual manual shutoff valve during any pressure testing of the gas supply piping system at test pressures equal to or greater than 1/2 psig. Over pressurizing can damage the control resulting in leakage or control malfunction.

**🔥 NOTICE: A QUALIFIED TECHNICIAN MUST CONNECT THE HEATER TO THE GAS SUPPLY AND LEAK TEST THE UNIT BEFORE IT IS APPROVED FOR USE. CONSULT ALL CODES.**

**🔥 WARNING: THE UNIT MUST BE INSTALLED AND CONNECTED IN ACCORDANCE WITH LOCAL CODES, OR IN THE ABSENCE OF LOCAL CODES, WITH THE MOST CURRENT EDITION OF THE NATIONAL FUEL GAS CODE ANSI Z223.1 (NFPA 54) OR CAN/CGA B149 INSTALLATION CODE. INSTALLER L'APPAREIL SELON LES CODES OU RÈGLEMENTS LOCAUX, OU, EN L'ABSENCE DE TELS RÈGLEMENTS, SELON LES CODES D'INSTALLATION CAN/CGA-B149**

**🔥 NFPA Code and Hearthstone require the use of a dedicated sediment trap just upstream of the unit. Damage to the valve, or other components due to the lack of a sediment trap are not covered by warranty (see figure 17).**

## High Altitude Installations

For high altitude installations consult the local gas distributor or the authority having jurisdiction for proper rating methods.

The decreased atmospheric pressure at higher altitudes affects the heat value of fuel gases. Gas suppliers typically derate the gas intended for use at elevations above 2000 feet (610 meters). This is not necessary with the Champlain.

### 🔥 WARNINGS

- Fire or Explosion Hazard. Can cause property damage, severe injury, or death. Do NOT bend tubing at gas valve connection point after compression fitting has been tightened. This can result in gas leakage at the connection.
- Use new properly prepared pipe free from metal or material chips. When tubing is used, assure that ends are square, de-burred and clean. All tubing bends must be smooth and free of distortion.
- Do NOT over tighten connections. Over tightening can damage the control body resulting in leakage or control malfunction.
- Do NOT remove screws from the gas valve. Do NOT adjust and/or alter any components marked with tamper indicating paint. Motor knob is not to be removed.
- Turn off gas supply at the appliance service valve before starting installation, and perform a Gas Leak Test after the installation is complete.
- Install the sediment trap (where required) in the gas supply line to prevent contamination of the gas valve (see figure 17).
- Use only your hand to push in or turn, the gas Control knobs. Never use tools. If a knob will not push in or turn by hand, do NOT try to repair it. Call a qualified service technician. Force or attempted repair will void warranty and can result in a fire or explosion.

## GAS CONNECTIONS

When threads are tightened, the valve must be held at the designated clamping areas (see figure 18). DO NOT apply pressure to top casting or plastic cover.

### Connection Main Gas (Tubing connections)

1. Do NOT use pipe joint compound or Teflon®/PTFE tape.
2. Slip nut and ferrule over tubing.
3. Slide nut and ferrule into place, and insert tubing into inlet/outlet connection until it bottoms. Turn until finger-tight.
4. Use a wrench to tighten nut about 1 turn beyond finger tight.

### Connection Main Gas (Pipe Connections)

1. Do NOT use Teflon®/PTFE tape.
2. Pipe to be inserted into the valve must be the proper thread length and to gauge. Thread that IS cut too long can cause distortion or malfunction if inserted too deeply.
3. Apply a moderate amount of approved pipe sealant to the pipe only, leaving the two end threads bare.
3. Connect pipe to valve inlet and outlet.

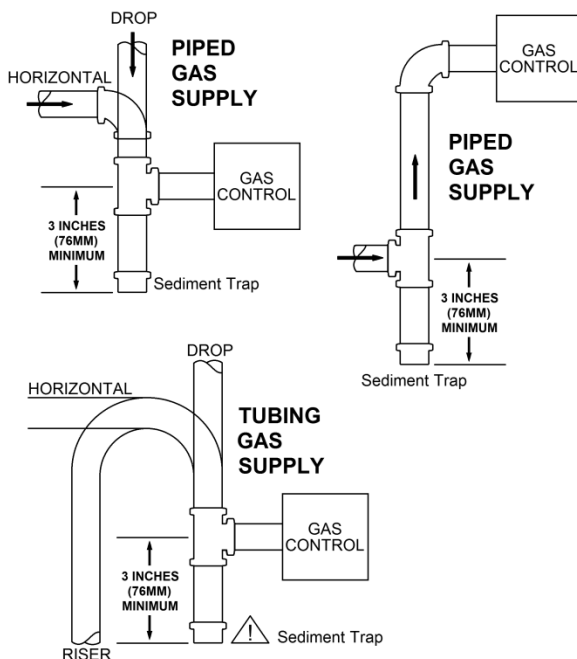


Figure 17 – Sample Gas Supply Sediment Traps

## PERFORM INITIAL GAS LEAK TEST

1. Check carefully for gas leaks immediately after the appliance has been installed and the gas turned on. **Do this before attempting to operate the appliance or other gas burning device.**
1. Use an approved non-corrosive leak detection fluid, or other approved leak detection method, around the diaphragm flanges, pipe connections, seal cap, and all other joints. Bubbles indicate a leak.
2. If no leakage is detected, proceed with the instructions listed on page 21 to light the main burner and perform a secondary leak check of the appliance gas supply system.
5. If a leak is detected, tighten pipe connections (including adapters) according to "GAS CONNECTIONS" (page 18).

### WARNING

Absolutely no leakage should occur, otherwise there is a danger of fire or explosion depending upon conditions. Never use if leakage is detected.

## Pre-Ignition Checks

### WIRING CONNECTIONS

(See figure 15, page 17)

- Assure all components are connected according to the wiring diagram.
- When GV60 components are installed, make sure they are not exposed to dirt, oil, grease or other chemical agents.
- Do NOT permit foreign particles under plastic cover.

### Thermocouple Circuit

Total resistance of thermocouple circuit should be minimized to ensure proper operation.

**NOTICE:** Keep connection of the Mertik Maxitrol interrupter block interrupter block and thermocouple clean and dry. Avoid severe bending of the thermocouple tubing during installation (min. 1" radius:2.5 cm) as this may cause it to fail. If the Mertik Maxitrol interrupter block must be removed for any reason, following the steps below to re-install:

- Tighten interrupter block into valve 1/4 turn beyond finger tight (2...3 Nm).

- Slide cables into plastic insert.
- Slide plastic insert with cables into the brass interrupter block.
- While keeping pressure on the cables and plastic insert, tighten the thermocouple 1/4 to 1/2 turn beyond finger tight (2...3 Nm).

**Ignition Cable**

Do NOT damage the ignition cable. When the cable is in place, avoid contact with sharp objects or edges. Avoid contact with metal parts, as this could decrease spark.

**Receiver**

1. Insert batteries.
2. Place ON/OFF switch on valve to ON position.

**Remote**

1. The receiver has to learn the handset code:  
Press and hold the receiver's reset button (*figure 37, page 31*) until you hear two (2) beeps. After the second, longer beep, release the reset button. Within the subsequent 20 seconds press the small flame button on the handset until you hear two (2) short beeps confirming the code is set.

*NOTE: This is a one-time setting only, and It is not required when changing the batteries in the hand set or receiver.*

2. Check the reception. For better reception straighten the antenna and move it to a position that allows for better line of sight (see notice below).
3. When the RF receiver is placed in the appliance, the surrounding metal can reduce reception considerably. The position of the antenna on the receiver also influences reception.

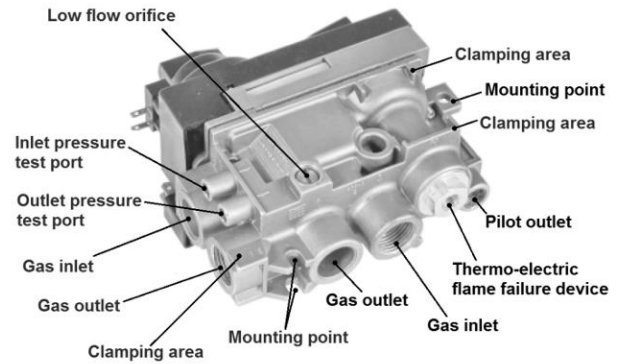
**NOTICE:** The antenna must not cross or come into contact with the ignition wire. This will render the receiver inoperable.

**⚠ WARNING**  
ELECTRIC SHOCK HAZARD.

- Read these instructions carefully. Failure to follow them could result in property damage, personal injury, or loss of life.
- This control must be electrically wired and operated in accordance with all codes and local

regulations. Service and installation must be performed by a trained, experienced service technician.

- Do NOT-use the module if you suspect it may be damaged.



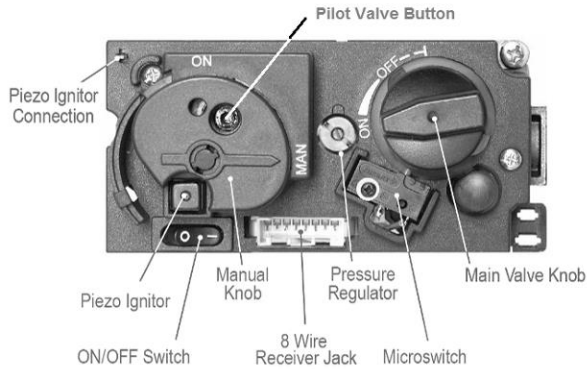
**Figure 18 – GV60 Valve Configuration (Side)**

**GAS CONTROL KNOB SETTINGS**

KNOB	POSITION	FUNCTION
Main Valve	OFF	Prevents main gas flow through valve.
Main Valve	ON	Permits main gas flow through valve if the pilot is lit and thermocouple is generating sufficient power.
MANUAL knob	MAN	Allow s the pilot to be manually ignited and prevents main gas flow .
MANUAL knob	ON	Allow s for automatic ignition.

**⚠ WARNING**

- Do NOT attempt to remove screws from the top of gas valve. Do NOT change any adjustments marked with tamper indicating paint. Motor knob is not to be removed.



**Figure 19 – GV60 Valve Configuration (Top)**

## Initial Lighting Instructions

Use a gas sniffer device or smell all around the appliance area for gas. Ensure you check at the floor also because unlike natural gas, propane is heavier than air. If you do not detect or smell gas, proceed with the lighting procedure. If you do detect or smell gas, **DO NOT** proceed with the lighting procedure.

### Pilot Light Warning

Do not attempt to light the unit with a match or by any means other than the ignition system supplied with the unit.

### To Light the Stove for Initial Leak Test:

#### Remote Control Ignition:

The Remote and Receiver must be synchronized before initial use (for instructions, see page 31). After synchronizing the remote perform the following steps to light the stove:

1. On the remote handset, simultaneously press the Large Flame and OFF buttons.
2. The stove receiver will begin to emit audible beeps and the ignition sequence will begin.
3. After several seconds, the piezo igniter will begin to spark and the pilot light will ignite.
4. After several more seconds, the main burner will ignite.
5. Select the desired flame height by pressing either the large flame or small flame icon on the remote. For additional operational information, see the MAXITROL GV60 CONTROL SYSTEM FEATURES section.

6. With the main burner in operation, apply an approved leak test solution to all tubing and pipe connections (including adapters) and the valve inlet and outlet. Bubbles indicate a leak.
7. If a leak is detected, tighten pipe connections (including adapters) according to "GAS CONNECTIONS" (page 18).

#### Manual Ignition (Optional):

1. Remove orange ignition wire from Control module and insert onto Piezo Ignitor Connection on valve top (see figures 15 and 19).
2. Open the gas supply to the valve.
3. Remove the access panel from the front of the stove and set on a non-marring surface.
4. Locate and turn the MANUAL Knob on the valve clockwise to the "MAN" position (see figure 19).
5. Turn the Main Valve knob to "OFF".
6. Using a pen or other device that will reach through the MANUAL Knob cut out, gently press the pilot button and hold it in the down position.
7. After a ten second wait, push the piezo igniter button on the valve every three seconds until you see the pilot light.
8. Once the pilot lights, continue holding the Pilot Button for one (1) minute. Release the Pilot Button and the pilot flame should remain on.
9. Once the pilot flame has been established, turn the Main valve knob counter-clockwise. The main burner will ignite after the Main Valve knob is turned past the minimum setting. Once the main burner is on, continue turning the Main Valve knob until the desired flame height is reached.
10. With the main burner in operation, apply an approved leak test solution to all tubing and pipe connections (including adapters) and the valve inlet and outlet. Bubbles indicate a leak.
11. If a leak is detected, tighten pipe connections (including adapters) according to "GAS CONNECTIONS" (page 18).

#### Smoke and Fumes Warning

When lit for the first time, the Champlain will emit some smoke and fumes. This is normal "off-gassing" of the paints and oils used in the manufacturing and assembly of the unit. Open windows to vent the room if necessary. The off

gassing and fumes will subside after the first 8 hours of operation.

### Odors and Impurities

A heater of this type may produce odors during heater operation at any time due to impurities that may exist in the immediate area around the unit. Sources of impurities can include cleaning solvents, paint solvents, cigarettes, candles, smoke, pet hair, dust, adhesives, new carpet, and/or textiles. Such odors will eventually dissipate. However, opening a window or otherwise providing additional ventilation to the area can alleviate the condition sooner. If any odor persists, find and remove the cause, or contact your dealer or an authorized service technician.

### Pilot Adjustment

**CAUTION: THE PILOT FLAME SHOULD ONLY BE ADJUSTED BY AN AUTHORIZED SERVICE TECHNICIAN.**

The pilot flow adjustment is preset to maximum at the factory. The pilot flame should envelope  $3/8"$  to  $1/2"$  of the thermocouple (see figure 20).

To adjust pilot:

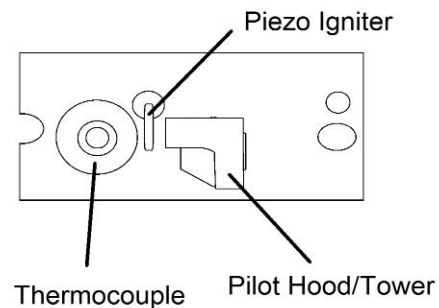
1. The adjustment screw can be reached through a hole in the MANUAL knob (see figure 21).
2. Turn the MANUAL knob to the ON position.
3. It is now possible to pierce through a film on the cover with a screwdriver to reach the adjustment screw beneath.
4. Turn the adjustment screw clockwise to decrease or counter-clockwise to increase pilot flame.

Controlling the Champlain manually or by the optional remote become erratic, nonexistent, or the unit may go out, if the pilot flame is too small or misdirected away from the thermopile.

**⚠ WARNING: THE CONTROL HAS AN INTERLOCK DEVICE. IF THE STOVE HAS BEEN LIT, IT WILL NOT RELIGHT AGAIN IMMEDIATELY. AFTER SHUTTING OFF ALL GAS FLOW, THE PILOT BURNER CANNOT BE RELIT UNTIL THE THERMOCOUPLE HAS COOLED (60 SECONDS TO 2 MINUTES).**

### Outlet Pressure Adjustment

**CAUTION: THE VALVE MAXIMUM OUTLET PRESSURE SHOULD ONLY BE ADJUSTED BY AN AUTHORIZED SERVICE TECHNICIAN AND IS PRE-SET AT THE FACTORY.**



**Figure 20 - Pilot Flame Pattern**

1. Connect a pressure manometer to the valve outlet pressure tap. Pressure tap is opened by turning the screw counter-clockwise (see figure 18).
2. Turn MANUAL knob and main valve knob to the ON position.
3. Turn pressure regulator adjustment screw to set required burner pressure (high fire). Pressure is increased by turning clockwise. (pressure regulator models), or decreased by turning counter-clockwise.
4. After adjustment, replace the plug.
5. If no other adjustments are required, close pressure tap(s) by turning the screw(s) fully clockwise until snug. Check all connections/pressure tap(s) for leaks.
6. If the desired outlet pressure or flow cannot be achieved by adjusting the gas valve, check the gas valve inlet pressure using a manometer at the valve inlet pressure tap. If the inlet pressure is in the normal range, replace the gas valve; otherwise, take necessary steps to assure proper gas pressure to the valve.

### Minimum Gas Flow Adjustment

**CAUTION: THE MINIMUM VALVE OUTLET PRESSURE SHOULD ONLY BE ADJUSTED BY AN AUTHORIZED SERVICE TECHNICIAN AND IS PRE-SET AT THE FACTORY.**

- a. Light the stove and engage the main burner.

- b. Set the control into low fire setting by quickly pressing the Low Flame button twice.
- c. The minimum rate can be set either by screwing in a calibrated minimum rate screw (LP, fixed orifice) or an adjustable minimum rate screw (NG). For the NG adjustable rate screw, turn the screw clockwise to decrease or counter-clockwise to increase the minimum flow. Once the Champlain has been converted to LP with the fixed rate low flow orifice, the low rate is not adjustable.

### Changing the fuel type

Follow the instructions in the LP Conversion Kit bag for greater detail on converting the appliance to LP.

#### To Switch the Main Burner Orifice:

Locate the orifice mounting location at the rear of the firebox. Using a 1/2" socket and extension, grasp orifice spud and turn counter-clockwise until loose. Remove and replace with #51 LP orifice spud, turning clockwise until snug.

#### To Switch the Valve to LP Operation:

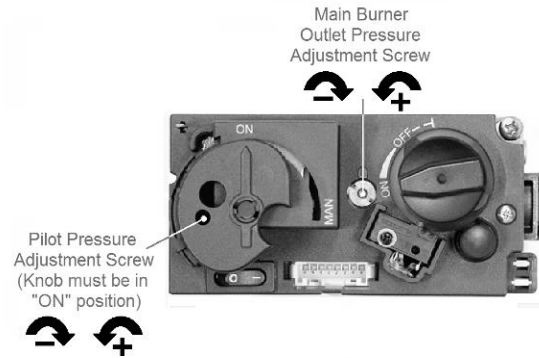
Convertible regulators are designed to deliver either of two fixed outlet pressures for Natural Gas (NG) or LP Gas. To change from one gas to the other, turn the outlet pressure screw housing (see figure 21) counter-clockwise to remove. **Be careful not to engage the small flat slot on the screw itself but use the larger slot of the screw housing to remove the unit.** Unsnap and remove the plastic part, rotate it 180°, and then slide it back on the conversion plug until it snaps. Reinstall the conversion plug by screwing it clockwise until it bottoms out. The low pressure orifice must also be changed (see figure 22-27, pages 24 -25).

**NOTE:** Do NOT adjust and/or alter any components marked with tamper indicating paint.

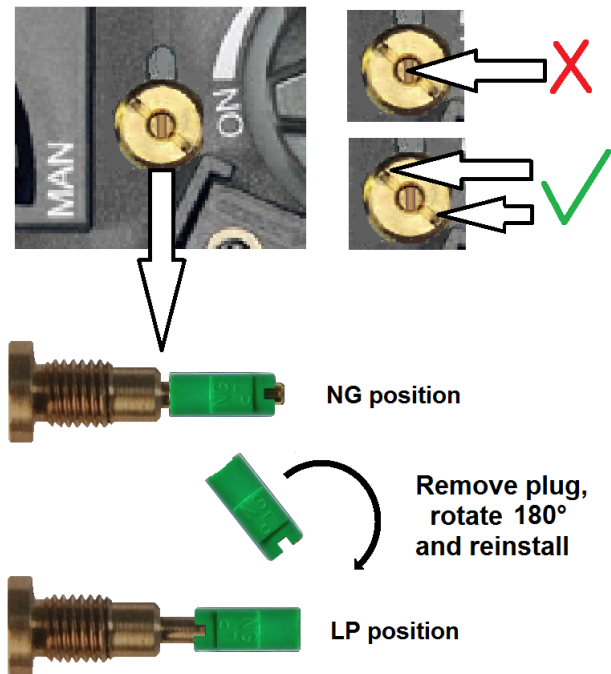
(Refer to Figures 21-27)

1. Remove the conversion plug from the valve body.
2. Carefully and without turning the adjusting screw, grasp the plastic conversion plug at the end of the pressure screw and remove it from the shaft by gently pulling away from the screw head.
3. Flip the conversion plug 180°.

4. Slide the conversion plug back on the pressure screw shaft and gently push until it clicks in place.
5. Reinstall the screw assembly using only the outer screw head slot for driving and seat it fully in the valve.



**Do not remove using small, center screw head. USE ONLY THE OUTER SLOTS.**



**Figure 21 - GV60 LP Conversion Steps**

6. Loosen the valve mounting bracket front two screws and swing the front of the valve assembly down.
7. Using a 4mm (5/32") allen wrench, loosen and remove the existing low pressure NG screw by turning counter-clockwise until it spins freely. It may be necessary to grasp the screw head with your fingernails or



gently pry it free of the valve body with a small flat blade screwdriver as the screw has an o-ring at the top that may gently hold it in the valve body even after fully loosening (see figure 24).

8. Insert the LP low pressure orifice in the receptacle, press firmly with finger to push o-ring past threads and tighten using the enclosed tool. Fully seat the orifice body in the valve (snug it down until it stops turning by turning clockwise).
9. Swing the valve mounting bracket back up into its original position.
10. Tighten the two front mounting screws and assure valve bracket is firmly held in position.



Figure 24 – Low Flow Orifice Removal – O-ring

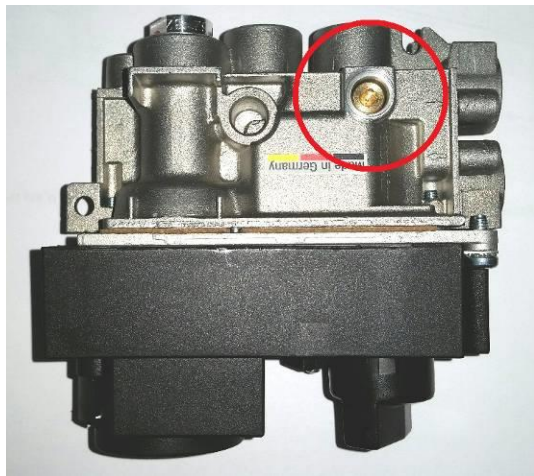


Figure 22 – Low Flow Orifice Location

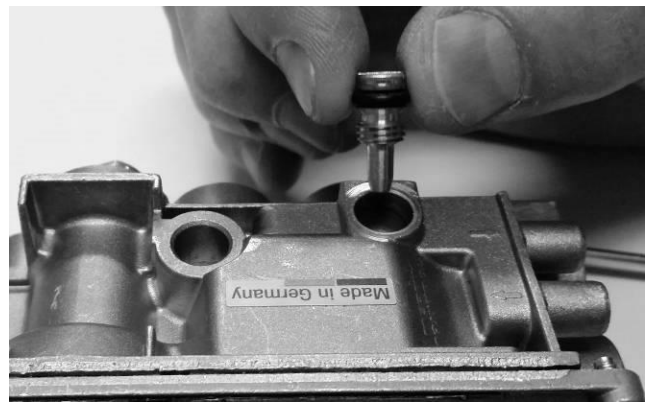


Figure 25 – NG Low Flow Screw Removal



Figure 23 – Low Flow Orifice Removal

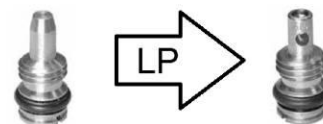


Figure 26 – Press LP Orifice into Valve to Compress O-ring



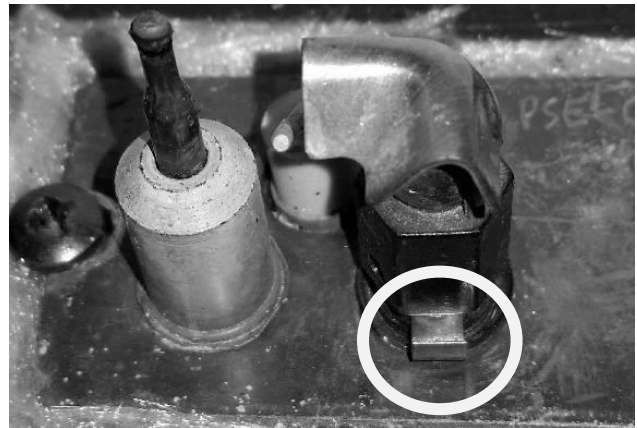
**Figure 27 – Tighten LP Low Flow Orifice**

**To Switch the Pilot to LP Operation:**

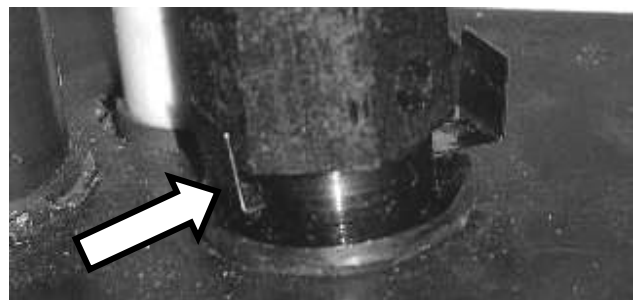
*(Refer to figures 28-31)*

The pilot assembly in the Champlain 8302 is a slide convertible unit, only requiring access from the firebox and a 7/16" open-end wrench. To convert pilot from NG to LP:

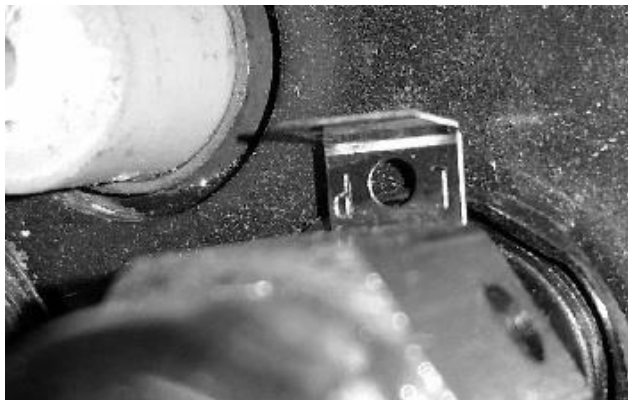
1. Follow steps listed in the Installation Preparation section on pages 9 - 10 for gaining access to the firebox and removing the logs.
2. Using the 7/16" wrench, grasp the pilot tower and turn counter-clockwise about 1/4 turn *(see figure 29)*.
3. Look at the front edge of the base of the pilot tower. You will see the NG/LP Pilot Orifice Gate protruding toward the front of the pilot tower and the letters "NAT" should be visible on the upper horizontal surface *(see figure 28)*. Slide the gate backward in the Pilot Tower by pushing on the upturned edge by the "NAT" lettering until the upturned edge is flush with the Pilot Tower surface. You will see the NG/LP Pilot Gate protruding from the back edge of the Pilot Tower and the letters "LP" will be visible, separated by a punched hole.
4. While holding the NG/LP Pilot Gate in the LP visible position, grasp the Pilot Tower with the 7/16" wrench and turn clockwise until the tower is snug. The Pilot Hood should be oriented such that one pilot flame is directed at the thermocouple and the other is facing the main burner *(see figure 31)*.



**Figure 28 – Pilot in NG (Pilot Gate forward)**



**Figure 29 – Loosen Tower and Slide Pilot Gate to Rear of Pilot Tower (LP position)**



**Figure 30 – Pilot in LP (LP text visible to rear of Pilot Tower)**



**Figure 31 – Pilot in LP (slide gate to rear of Pilot Tower)**

### Initial Adjustments

Once the Champlain is set in place, connected and assembled as described in the Clearances To Combustibles, Venting Components & Configurations, Electrical Connections, Log Placement and Maxitrol GV60 Control System Features & Gas Supply Connections sections of this manual, the unit is ready to be lit and adjusted to its particular installation. Hearthstone tests each unit prior to shipment, so ignition should take place without issue. However, a number of small adjustments may be necessary to compensate for variations in gas pressure, altitude, and other factors particular to each installation. Read pages 28-30 to complete installation specific setup.

## TO SHUT DOWN THE APPLIANCE AND TURN OFF GAS

### Remote Control:

1. Push the OFF button on the remote once (See page 33).
2. Remove valve access panel.
3. Turn the ON/OFF switch on the valve to OFF.
4. Replace valve access panel.
5. Turn the gas supply valve to the off position.

### Manual Mode:

1. Remove valve access panel.
2. Turn the Main Valve Knob clockwise to OFF.
3. Turn the ON/OFF switch on the valve to OFF.
4. Replace valve access panel.
5. Turn the gas supply valve to the off position.

## FINAL CHECK

Observe several complete cycles to ensure proper operation. During these cycles the electronics will determine the optimum ignition sequence timing.

## Log Set Placement

⚠ **CAUTION: FRAGILE! HANDLE LOG SET WITH CARE. ALWAYS WEAR GLOVES AND SAFETY GOGGLES WHILE HANDLING THE LOG SET.**

⚠ **WARNING: FAILURE TO POSITION THE PARTS IN ACCORDANCE WITH THESE DIAGRAMS OR FAILURE TO USE ONLY PARTS SPECIFICALLY APPROVED WITH THIS APPLIANCE MAY RESULT IN PROPERTY DAMAGE OR PERSONAL INJURY. AVERTISSEMENT. RISQUE DE DOMMAGES OU DE BLESSURES SI LES PIÈCES NE SONT PAS INSTALLÉES CONFORMÉMENT À CES SCHÉMAS ET OU SI DES PIÈCES AUTRES QUE CELLES SPÉCIFIQUEMENT APPROUVÉES AVEC CET APPAREIL SONT UTILISÉES.**

Place only the ceramic log set supplied with the unit in the firebox. Do not place any other ceramic logs, wood logs, or other materials in the firebox. If the log set is damaged or broken contact your dealer for replacement. The ceramic logs will last a long time; however, they will break if subjected to rough or improper handling. Exact positioning of the log set is required in order to obtain a pleasing flame pattern and efficient combustion. Incorrect log placement may cause carbon build-up; excess thermal stress on the log set and stove parts, reduced efficiency, and high levels of carbon monoxide. Position the log

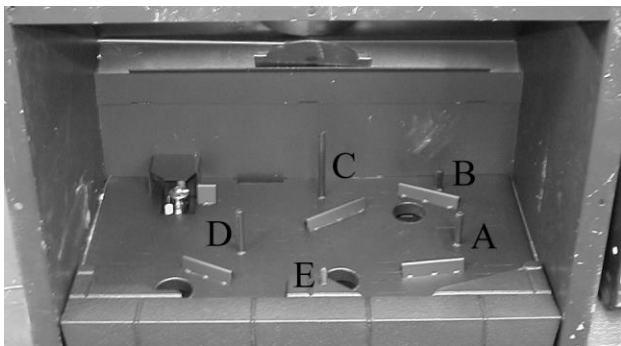
set exactly as shown in order to obtain a pleasing flame pattern and efficient combustion. Incorrect log placement can cause carbon build-up; excess thermal stress on the log set and stove parts, reduced efficiency, and high levels of carbon monoxide. If the log set does not fit into the firebox exactly as outlined, contact your dealer for assistance.

## Installation of the Log Set

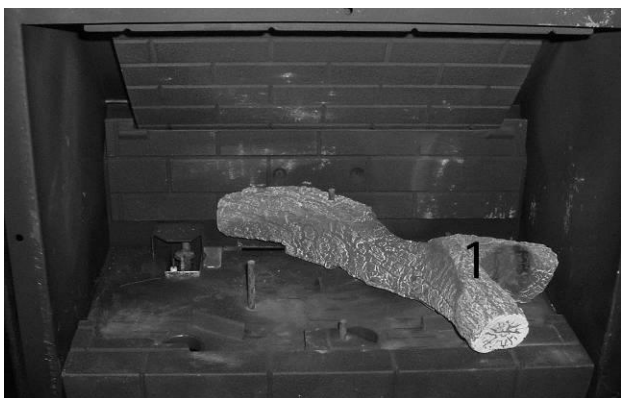
**CAUTION: DO NOT PLACE EMBERS NEAR THE PILOT.**

*(Refer to the figures in this section)*

1. If not already opened, follow the instructions for firebox access on page 9.
2. Remove the packaging material around the log set assembly. Be careful not to damage the log set when unpacking. Observe the 5 mounting "posts", A, B, C, D, and E.



3. Gently slide the Y-shaped Log (1) onto pins A and C, as shown next.



4. Gently slide the longer, "half" log (2) onto pin D. Be sure to position the rear of the log in front of the pilot assembly and against the left side of the firebox as shown below.



5. Gently slide the shortest of the "half" logs (3) onto pin B as shown below.



6. Gently slide the medium length of the "half" logs (4) onto pin E as shown next.



7. Gently slide the split log (5) onto pins C and D as shown below.



8. Place the right end of the curved log (6) onto the protruding pin C on log 1, and rest its left end on log 2 as shown below. Push this log back until the curve is against the baffle.



9. Spread the Charcoal Embers evenly across the front portion of the Pan Burner, one layer high. You may or may not need to use all of the Charcoal Embers. Keep the rest for use in the future. Do not drop the embers into the burner holes. Locate and open the bag of Platinum Bright Embers. Pull apart small pieces of the wool and sprinkle over the Charcoal Embers randomly. This wool will glow brightly once the unit is running.



10. Replace the glass frame by sliding it down the face of the firebox and pushing the top back. Slide the two clips back down to hold the frame in place.

## Removal of Log Set

- 🔥 **CAUTION! LOG SET AND CHARCOAL EMBERS WILL RETAIN HEAT AND CAN BE VERY HOT, IF RECENTLY LIT! ALLOW AT LEAST 1 HOUR AFTER PILOT LIGHT IS TURNED OFF BEFORE HANDLING.**

To remove the log set, follow the Installation of Log Set instructions in the reverse order.

- 🔥 **CAUTION! FRAGILE! HANDLE LOG SET AND CHARCOAL EMBERS WITH CARE.**

## Completing the Installation

1. Once the firebox is closed and all cast iron panels are re-installed, follow start up procedure outlined below.

## Air Shutter

The air shutter is used to regulate the air-to-gas combustion mixture, which in turn influences the size and color of the flames. The air shutter is factory positioned in the general location needed for testing the unit with natural gas (NG) and minimum venting. However, if the unit is not burning as well as it should in your installation, then the air shutter may need adjusting.

To determine if the air shutter needs adjustment, it is necessary to view the flame pattern with the burner output set at its highest setting. Allow the unit to operate for at least 10 minutes to allow the entire unit to reach operating temperature, and for the flame pattern to stabilize. Generally, the more air (open shutter) in the mixture, the bluer the flame. Less air (closed shutter) results in a more yellow flame, but too little air will result in incomplete combustion, low efficiency and a dirty burn. There are two simple guidelines to aid in determining the correct flame pattern:

1. If the flame just above the surface of the burner or at the base of the logs is completely blue, the air shutter may be open too far.
2. If the flame is dirty, sooty or licks the top of the baffle, the air shutter may be closed too far.

Some conditions cannot be corrected through air shutter adjustment; an adjustment must be made to the gas supply pressure or by changing the

restriction plate setting. Qualified service personnel must perform supply line/manifold gas line pressure adjustments and restrictor plate adjustments. Do not attempt to complete any part of the installation or adjustment of this unit unless technically qualified.

## Air Shutter Adjustments

🔥 **WARNING: THE ADJUSTING BOLT IS HOT!**

🔥 **WARNING: THE AIR SHUTTER IS FACTORY SET AND ONLY A QUALIFIED GAS TECHNICIAN SHOULD MAKE ADJUSTMENTS.**

The air shutter is adjustable while the stove is burning. Loosen the lock nut on the adjusting bolt located in the lower rear center of the stove. Move the bolt in or out to adjust the flame pattern (see *figures 32 and 33*). Turn the bolt in to open the air shutter, and turn it out to close the shutter. When the flame pattern is correct, hold the adjusting bolt head still with a wrench and tighten the locking nut to the body of the stove.

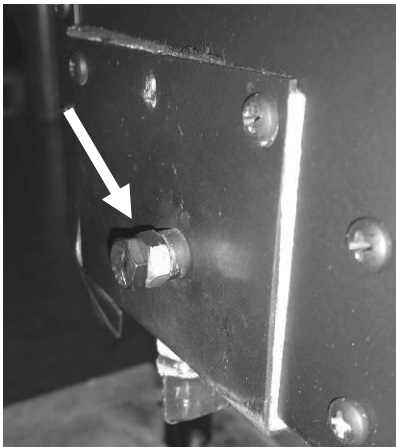


Figure 32 – Air Shutter Open

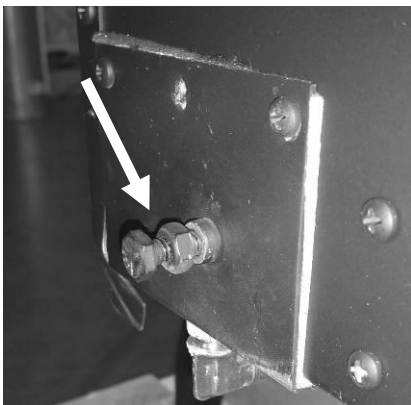


Figure 33 – Air Shutter Closed

**Note:** Very little movement is needed to substantially change the burn and flame patterns. Some conditions cannot be corrected through air shutter adjustment; an adjustment must be made to the gas supply pressure. Supply line/manifold gas line pressure adjustments must be performed by qualified service personnel. Do not attempt to complete any part of the installation or adjustment of this unit unless technically qualified to do so.

## Burner Flame Appearance

Once the unit is lit, observe the flame pattern and adjust as necessary. Also, a periodic visual check of the burner flame should be performed. The burner flames can be adjusted by means of the air shutter. To determine if the burner flame needs adjustment, it is necessary to view the flame pattern with the valve output at its highest setting. Allow the unit to operate for 10 minutes enabling the entire unit to reach temperature and for the flame pattern to stabilize. The flame pattern should be similar to the one shown in *figure 34*. There are several guidelines to aid in determining if the flame pattern is correct:

1. The flame should not be dirty, smoky, sooty, or lick the top of the stove.
2. The flame should not rise off the pan burner; this is called "lifting".
3. Flames should not impinge heavily on the log set. They should "fit" through the pre-formed spaces designed in the log set.



Figure 34 – Typical Burner Flame Appearance

**Restrictor Plate**

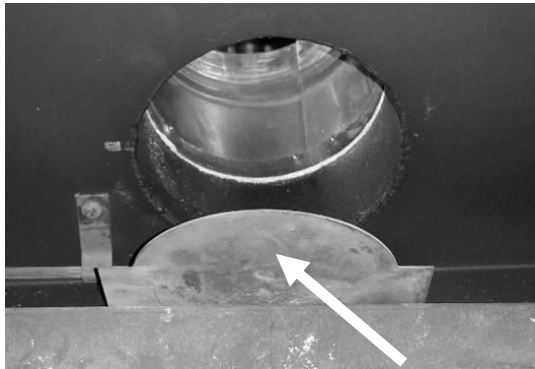
The restrictor plate is used to control excess draft if necessary. Controlling the draft also changes the aesthetics of the flame. The restrictor plate has a large range of unlimited settings (see figures 35 & 36). The adjustment point is on the left side of the firebox (from front).

**Restrictor Plate Position**

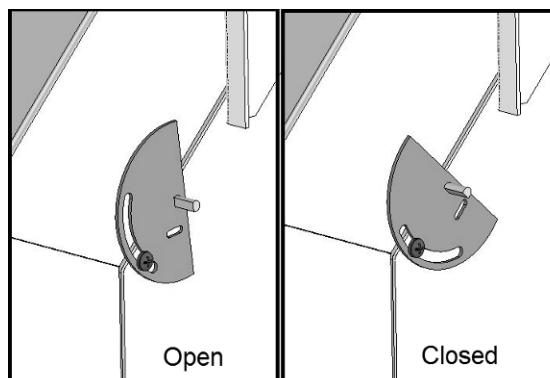
The restrictor plate may be factory set in the fully closed position for shipping. If so, set to the fully opened position. This ensures proper flames for a wide variety of vent configurations and efficiency. The restrictor plate consists of a rotating flap in front of the firebox exhaust port behind baffle plate. Depending on your vent configuration, you may need to adjust the restrictor plate position to reduce draft.

**Restrictor Plate Adjustment**

Loosen the screw and position the restrictor plate in the desired location. Tighten the screw to lock in place.



**Figure 35 - Restrictor Fully Open Detail (baffle removed for clarity)**



**Figure 36 - Restrictor Adjuster Arm Detail**

# Maxitrol GV60 Control System Features

🔧 **NOTE: REMOVE THE MODESTY PANEL BELOW THE FRONT CASTING FOR ACCESS TO ELECTRICAL AND GAS CONNECTIONS.**

**TECHNICAL SPECIFICATIONS**

Gas combination control according to CSA approval (see label for certification)

**FUELS**

CSA: Suitable for natural, manufactured, mixed gases, liquefied petroleum gases, and LP gas-air mixtures.

**APPROVALS**

CSA: ANSI Z21.78/CSA 6.20 for U.S. & Canada, ANSI Z21.20/CSA 6.20 for U.S. & Canada

**PRESSURE DROP/CAPACITY**

CSA: 1" W.C. at 65,000 BTU/hr

**RANGE OF REGULATION**

CSA: 10,000 to 85,000 BTU/hr

**REGULATOR ADJUSTMENT**

CSA: 3" W.C. to 5" W.C. (7.5 to 12.5 mbar); 8" W.C. to 12"

W.C. (20 to 30 mbar)

Convertible Regulator: 3 to 4.5" NG/8.5 to 11.5" LP

**MOUNTING POSITION**

Mount valve 00 to 900, in any direction (including vertically) from the upright position of the gas control knob.

**MAXIMUM INLET PRESSURE**

CSA: 1/2 psi (3.45 mbar)

**MAIN GAS CONNECTION**

CSA: 3/8" in, NPT; Rp3/78" ISO 7-1 internal thread for 12 mm, 10 mm, 8 mm, 6 mm outside diameter tube.

**INLET AND OUTLET CONNECTION**

Side or Bottom

**MAXIMUM ALLOWED TORQUE INLET AND OUTLET**

CSA: .280 inch-pounds

**PILOT GAS CONNECTION**

CSA: 7/16-24 UNS for 1/4" or 3/16" tubing

**THERMOCOUPLE/INTERRUPTER BLOCK**

11/32-32 UNS, M10x1, M9x1, M8x1

**AMBIENT TEMPERATURE RANGE**

Combination control: 32°F to 176°F (0°C to 80°C)

Latching solenoid valve: 32°F to 176°F (0°C to 80°C)

Receiver RF without batteries: 176°F (80°C)

Receiver RF with batteries: 131°F (55°C)

Receiver infrared with/without batteries: 131°F (55°C)

Handset: 140°F (60°C)

Wall switch/Touchpad: 176°F (80°C)

Switch panel: 221°F (105°C)

Module: 176°F (80°C)

Ignition cable: 302°F (150°C)

Misc. cables: 221°F (105°C)

Infrared sensor: 176°F (80°C)

Cable with relay: 158°F (70°C)

**HANDSETS**

**NOTICE:** The handsets, receivers, wall switches, switch panels and touch pads are not interchangeable with previous electronics.

**RADIO FREQUENCY**

Radio Frequency Handset

433.92 MHz for Europe; 315 MHz for U.S. (FCC 10: RTD-G6R) and for Canada (le: 4943A-G6R).

This device complies with part 15 of the FCC Rules. Operation is subject to the following two conditions: (1) This device may not cause harmful interference, and (2) This device must accept any interference received, including interference that may cause undesired operation. Changes or modifications not expressly approved by the party responsible for compliance could void the user's authority to operate the equipment.

**GENERAL NOTES****Batteries – Handset**

- 1x 9V (quality alkaline recommended).
- Low battery indicator on handsets with display.
- Battery replacement is recommended after 2 years

**Batteries – Receiver**

- 4 x 1.5V "AA" (quality alkaline recommended).
- Low battery indication: frequent beeps for 3

seconds when motor turns.

- An AC Mains Adapter may be used instead of batteries.\*
- The module for fan speed control and light dimmer includes mains power together with batteries in the receiver for automatic backup in case of power outage.
- Without using a mains adapter, battery replacement is recommended at the beginning of each heating season.

*\* Only the Mertik Maxitrol AC Mains Adapter or one preapproved by Mertik Maxitrol can be used. Use of other adaptors can render the system inoperable.*

**NOTICE:** The handsets, receivers, wall switches, switch panels and touch pads are not interchangeable with previous electronics (see figure 21).

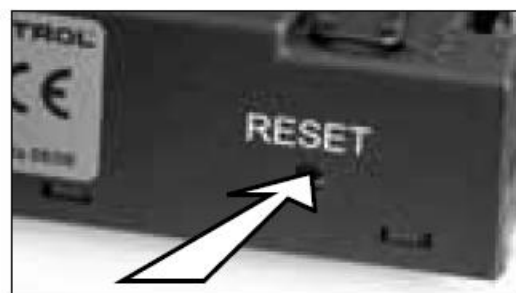
**STARTING THE APPLIANCE****Remote Control Operation**

A code is selected automatically for all Mertik Maxitrol electronics from among 65,000 random codes available. The receiver has to learn the code of the handset:

Press and hold the receiver's reset button (see figure 37) until you hear two (2) beeps. The first beep is short and the second beep is long. After the second beep, release the reset button.

Within the subsequent 20 seconds press the Small Flame button on the handset until you hear two additional short beeps confirming the code is set. If you hear one long beep, this indicates the code has failed or the wiring is incorrect.

**NOTE:** This is a one-time setting only and is not required after changing the batteries of the handset or receiver.



**Figure 37 – Receiver Reset Button Location**



## Manual Ignition/Operation

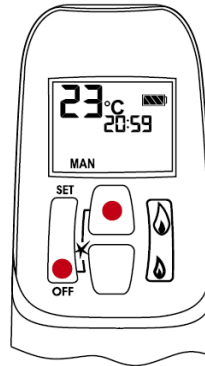
1. Remove orange ignition wire from Control module and insert onto Piezo Ignitor Connection on valve top (see figures 15 and 19).
2. Open the gas supply to the valve.
3. Remove the access panel from the front of the stove and set on a non-marring surface.
4. Locate and turn the MANUAL Knob on the valve clockwise to the "MAN" position (see Figure 19).
5. Turn the Main Valve knob to "OFF".
6. Using a pen or other device that will reach through the MANUAL Knob cutout, gently press the pilot button and hold it in the down position.
7. After a ten second wait, push the piezo igniter button on the valve every three seconds until you see the pilot light. If the pilot does not light after one minute, release the pilot button and wait 5 minutes for gas to clear then repeat step 5. If the pilot has not ignited after three attempts at the ignition sequence, STOP ALL ATTEMPTS TO LIGHT PILOT AND CALL AN AUTHORIZED SERVICE TECHNICIAN.
8. If the pilot lights, continue holding the Pilot Button for one (1) minute. Release the Pilot Button and the pilot flame should remain on. If it does, proceed to step 8. If the pilot flame does not remain on after you release the Pilot Button, repeat steps 5 and 6 above. If the pilot does not remain on after three attempts, STOP ALL ATTEMPTS TO LIGHT PILOT AND CALL AN AUTHORIZED SERVICE TECHNICIAN.
9. Once the pilot flame has been established, turn the Main valve knob counter-clockwise. The main burner will ignite after the Main Valve knob is turned past the minimum setting. Once the main burner is on, continue turning the Main Valve knob until the desired flame height is reached.
10. If the Main Burner does not ignite, return the Main Valve knob clockwise back to "OFF", wait three (3) minutes and repeat step 8. If the main burner does not ignite after a repeat attempt, STOP ALL ATTEMPTS TO LIGHT THE MAIN BURNER, TURN THE MANUAL KNOB TO ON, SHUT OFF THE GAS SUPPLY VALVE AND CALL AN AUTHORIZED SERVICE TECHNICIAN.
11. Once the main burner is ignited, replace the access panel. Further adjustments to the flame height are controlled by turning the

Main Valve knob clockwise for less flame and counter-clockwise for more fire.

## DAILY OPERATION

### TURN ON THE APPLIANCE

#### Handset



- Simultaneously press the OFF and & large flame buttons until a short beep confirms the start sequence has begun; release buttons.
- Continuing beeps confirm the ignition is in process.
- Once pilot ignition is confirmed, main burner gas flow will begin.
- After main burner ignition, the handset will automatically go into manual mode.

#### Wall Switch/Touch Pad/Switch Panel

- Press button "B" (see Figure 38) until a short beep confirms the start sequence has begun; release button.
- Continuing beeps confirm the ignition is in process.
- Once pilot ignition is confirmed, there is main gas flow.

#### **WARNING**

If the pilot does not stay lit after several tries, turn the main valve knob to OFF and follow the instructions **"TO SHUT DOWN THE APPLIANCE AND TURN OFF GAS"** on page 27.

### STANDBY MODE (Pilot Flame)

#### Handset

- Press and hold small flame to set appliance at pilot flame.

#### Wall Switch/Touch Pad/Switch Panel

- Press and hold button "C" (see figure 45) to set appliance at pilot flame.

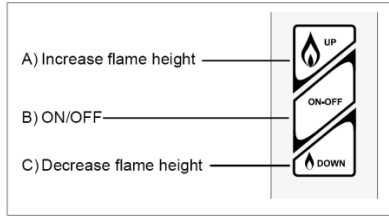


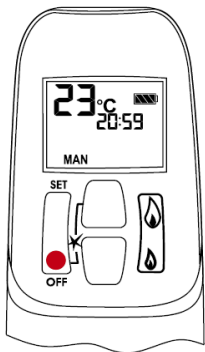
Figure 38 – Optional Touch Pad

**Wall Switch/Touch Pad/Switch Panel**

(See figure 45)

- Press and hold button "A" to increase flame height.
- Press and hold button "C" to decrease flame height or to set appliance at pilot flame.
- For fine adjustment tap button "A" or "C".

**TO TURN OFF APPLIANCE**



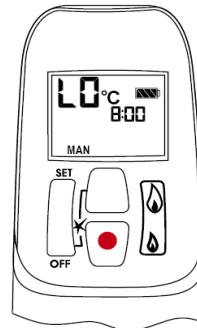
**Handset**

- Press OFF button

**Wall Switch/Touch Pad/Switch Panel**

- Press button "B" (see figure 45).

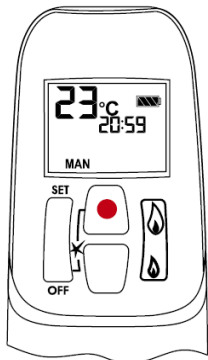
**Designated Low Fire and High Fire**



- Double-click small flame button. "LO" will be displayed.

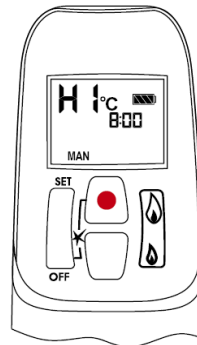
NOTE: Flame goes to high fire first before going to designated low fire.

**FLAME HEIGHT ADJUSTMENT**



**Handset**

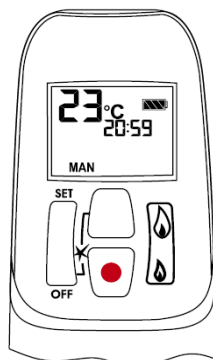
- In standby mode: Press and hold large flame button to increase flame height.



- Double-click large flame button. Flame automatically goes to high fire. "HI" will be displayed.

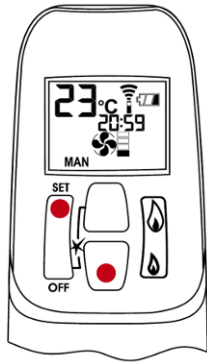
**TURNING FRONT BURNER ON/OFF (ONLY on Bristol 8763 and Waitsfield 8770)**

NOTE: The latching solenoid valve cannot operate manually. If the battery runs down it will remain in the last operating position. During normal operation the solenoid valve will be reset to the ON position when the GV60 is switched OFF remotely.



- Press and hold small Flame button to decrease flame height or to set appliance at pilot flame.
- For fine adjustment tap The Large flame or small flame buttons.

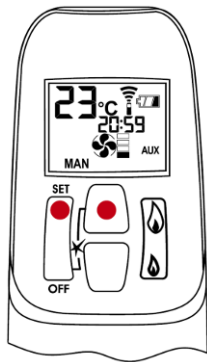
**WARNING**  
 If the appliance will not operate, follow the instructions **"TO SHUT DOWN THE APPLIANCE AND TURN OFF GAS"** on page 26.



- Upon ignition Front and Rear are ON.
- Simultaneously press **SET** and small flame buttons to switch the Front burner OFF. Printed instructions are on the battery cover (see figure 39).

- In the Light/Dimmer mode the OFF button shuts OFF the light.
- If you want the light ON but no flame, press and hold the small flame button and turn to Pilot flame.

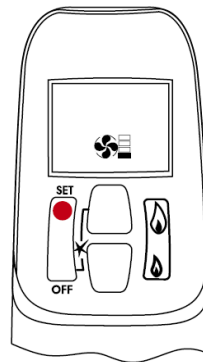
NOTE: The light bulb icon is displayed during light/dimmer setting only. 8 seconds after the light/dimmer has been set, the handset will automatically go into temperature control mode (CSA version) or manual mode (CE version).



- Simultaneously press **SET** and large flame buttons to switch Front burner ON. (The AUX symbol on the display indicates the solenoid valve is OPEN)

NOTE: The operation of the burner control valve is blocked in timer OFF mode, when the setting of the Nighttime Setback Temperature (moon icon) is " \_ \_".

**CIRCULATING FAN OPERATION  
(ONLY on Bristol 8763 and Waitsfield 8770))**



The circulating fan has 4 speed levels from low (1 bar) to high (4 bars).

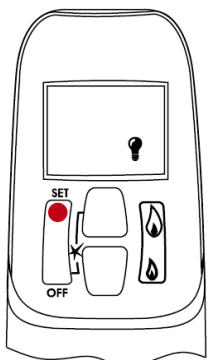
- Briefly press **SET** button to scroll to the fan icon. Fan and Level icons flash.
- Press large flame button to switch ON and increase fan speed.
- Press small flame button to Decrease fan speed. To turn OFF fan, press small flame button until all 4 speed level bars disappear.

NOTE: 8 seconds after the fan has been set, the handset will automatically go into temperature control mode (CSA version) or manual mode (CE version). The fan starts 4 minutes after the gas opens (from OFF or from pilot) at maximum speed and goes to the displayed level after 10 seconds. The fan stops 10 minutes after the gas is OFF or at pilot.



Figure 39 – Aux Burner Control Instructions

**LIGHT/DIMMER OPERATION  
(ONLY on Bristol 8763 and Waitsfield 8770)**



- Briefly press **SET** button to scroll to light bulb icon. Light bulb icon flashes.
- Press and hold large flame button to turn ON the light or increase brightness.
- Press and hold small flame button to decrease brightness.

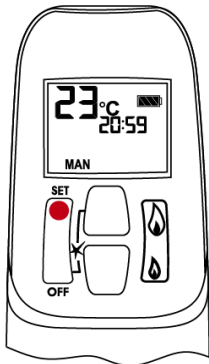
**MODES OF OPERATION**

- Briefly pressing the **SET** button changes the mode of operation in the following order:



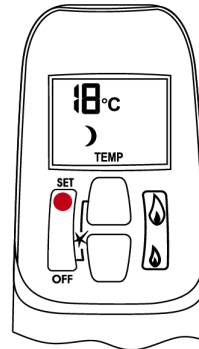
NOTE: Manual mode can also be reached by pressing either the large flame or the small flame button.

NOTE: To turn OFF fan press small flame until all 4 speed bars disappear.



- Manual Mode

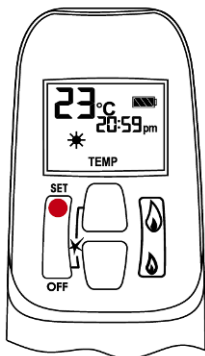
Manual flame height adjustment.



- Nighttime Setback Temperature Mode  
(Appliance must be in standby mode; pilot ignited)

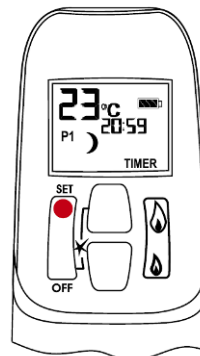
The room temperature is Measured and compared to the Nighttime Setback Temperature. The flame

height is then automatically adjusted to achieve the Nighttime Setback Temperature.



- Daytime Temperature Mode  
(Appliance must be in standby mode; pilot ignited)

The room temperature is measured and compared to the set temperature. The flame height is then automatically adjusted to achieve the Daytime Set Temperature .

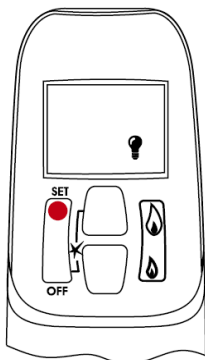


- Timer Mode  
(Appliance Must be in standby mode; pilot ignited)

The Timers P1 and P2 (Program 1, Program 2) each can be programmed to go ON and OFF at specific times. For instructions see Timer Programming

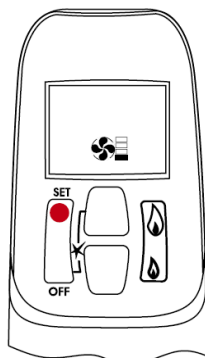
Mode.

NOTE: The display shows the set temperature every 30 seconds.



- Light/Dimmer Mode (Optional)

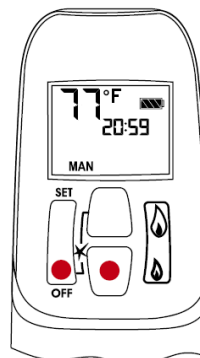
Turns light/dimmer ON and OFF and adjusts brightness.



- Circulating Fan Mode (Optional)

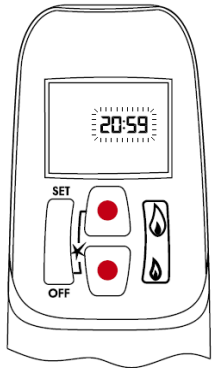
Turns circulating fan ON and OFF and adjusts fan speed.

### SETTING °C/24 HOUR OR °F/12 HOUR CLOCK

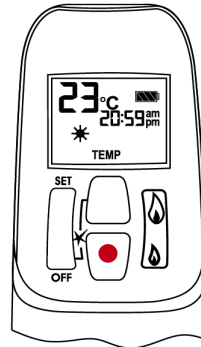


- Press **OFF** and small flame button until display changes from Fahrenheit/12 hour clock to Celsius/24 hour clock and vice versa.

### SETTING THE TIME



- The Time display will flash after either:
  - a) Installing the battery or
  - b) Simultaneously pressing the large flame and small flame buttons.
- Press large flame button to set the hour.
- Press small flame button to set the minute.
- Press OFF or simply wait to return to manual mode.

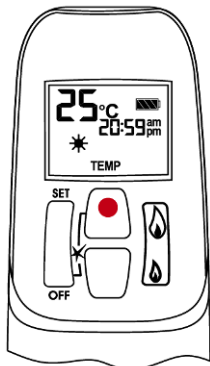


- Press small flame button to decrease Daytime Set Temperature.
- Press OFF or simply wait to complete programming.

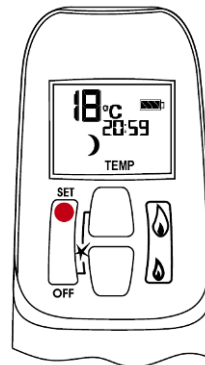
### Setting the NIGHTTIME SETBACK Temperature DEFAULT SETTINGS: “\_” (OFF)

### SETTING THE ON/OFF TEMPERATURES

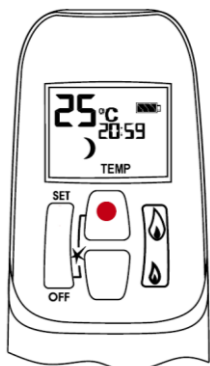
#### Setting the DAYTIME Temperature DEFAULT SETTINGS: 23°C/74°F



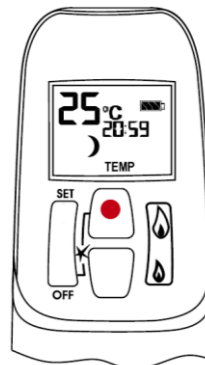
- Briefly press **SET** button to scroll to TEMP mode (sun icon). Hold the **SET** button until the set temperature on the screen flashes.



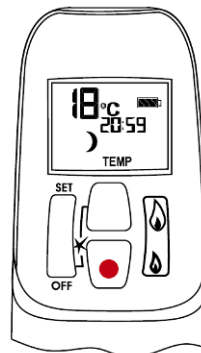
- Briefly press **SET** button to TEMP mode (moon icon). Hold the **SET** button until the set temperature on the screen flashes.



- Press large flame button to increase Daytime Set Temperature.



- Press large flame button to increase Nighttime Setback Temperature.

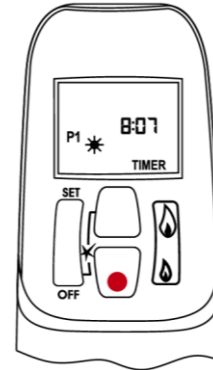


- Press small flame button to decrease Nighttime Setback Temperature.
- Press **OFF** or simply wait to complete programming.

## SETTING PROGRAM TIMERS

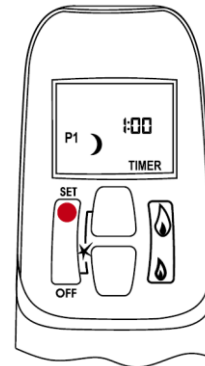
### Default Settings

- CE: Program 1: P1 ☀: 6:00 P1 🌙: 8:00  
 Program 2: P2 ☀: 23:50 P2 🌙: 23:50  
 CSA: Program 1: P1 ☀: 6:00<sup>am</sup> P1 🌙: 8:00<sup>am</sup>  
 Program 2: P2 ☀: 11:50<sup>pm</sup> P2 🌙: 11:50<sup>pm</sup>
- 2 ON times can be programmed ☀ per day.
  - CE: The day starts at 0:00, ends at 23:50.
  - CSA: The day starts at 12:00<sup>am</sup>, ends at 11:50<sup>pm</sup>.
  - The ON/OFF times have to be programmed in the order P1 ☀ ≤ P1 🌙 < P2 ☀ ≤ P2 🌙.
  - If P1 ☀ = P1 🌙 or P2 ☀ = P2 🌙 the timer is deactivated.
  - To have the fire over night, it can be set:  
 CE: P2 🌙 23:50 and P1 ☀ 0:00  
 CSA: P2 🌙 11:50<sup>pm</sup> and P1 ☀ 12:00<sup>am</sup>

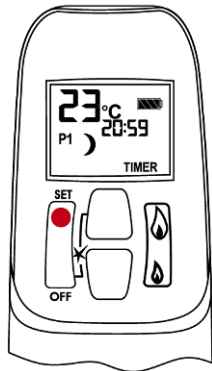


- Set the minutes by pressing the small flame button.

### Setting P1 OFF Time

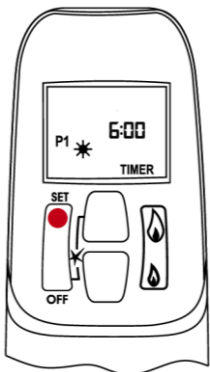


- Select Timer Mode by briefly pressing the **SET** button until P1 and the crescent moon appear.
- Briefly press **SET** button to scroll to setting P1 OFF time (P1 and moon) is displayed and the time flashes.

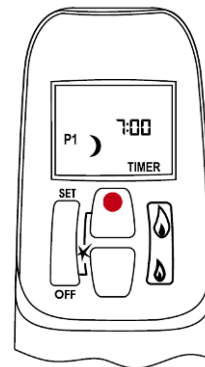


- Select Timer Mode by briefly pressing the Set button until P1 and the crescent moon appear.

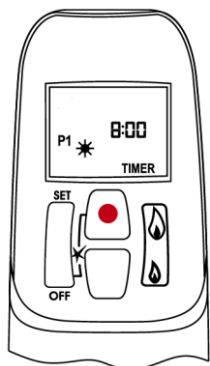
### Setting P1 ON Time



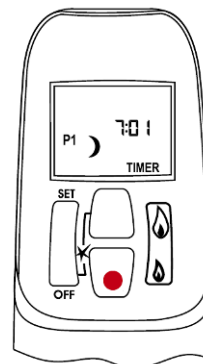
- Hold the **SET** button until P1 and the sun icon displayed and the time flashes.



- Set the hour by pressing the large flame button.



- Set the hour by pressing the large flame button.



- Set the minutes by pressing the small flame button.

**Setting P2 ON Time**

- Once P1 times are set, briefly press **SET** button to scroll to setting P2 ON time. P2 and the sun icon are displayed and the time flashes.
- See instructions SETTING P1 ON TIME.

**Setting P2 OFF Time**

- Briefly press **SET** button to scroll to setting P2 OFF time. P2 and the crescent moon icon are displayed and the time flashes.
- See instructions SETTING P1 OFF TIME.
- This concludes programming Timers P1 and P2. Press OFF or wait. The handset will automatically save your changes.

**TO TURN OFF GAS TO APPLIANCE**

1. Place ON/OFF switch in 0 (OFF position).
2. If gas control is accessible turn main valve knob to the OFF full clockwise position.
3. Replace appliance access cover.

**AUTOMATIC TURN DOWN****6 Hour no Motor Movement**

(CSA version)

- Manual Model/Temperature/Timer Mode: The valve will turn to pilot flame if there is no change in flame height for a 6 hour period. In Temperature/Timer Mode if the ambient room temperature changes, the flame height will adjust automatically to maintain set temperature, and the fire will continue to function normally. The valve will turn to pilot flame if the set temperature and the ambient room temperature remain the same over a 6 hour period.

**Receiver Overheating**

- Valve turns to pilot flame if the temperature in the receiver is higher than 140°F (60°C). The main burner comes back on only when the temperature is below 140°F (60°C).

**AUTOMATIC SHUT OFF****Low Battery Receiver**

- With low battery power in the receiver the system shuts off the fire completely. This will not happen if the power supply is interrupted.

**Five Day Shut Off**

(CSA version)

- The system shuts off the fire completely if there is no change in flame height for 5 days.

NOTE: Before the next ignition there is a 2 minute waiting period.

## Routine Maintenance and Care

**Your Champlain requires minimal routine maintenance and care. Ensure the unit is cool and off when cleaning, or servicing.**

**⚠ WARNING: DO NOT SUBSTITUTE MATERIALS.**

For replacement parts, or for information about parts or service, contact your local Hearthstone dealer.

**Any safety screen or guard removed for servicing an appliance must be replaced prior to operating the appliance. *Tout écran ou protecteur retiré pour permettre l'entretien de l'appareil doit être remis en place avant de mettre l'appareil en marche.***

### Cleaning

**⚠ WARNING: DO NOT CLEAN THE UNIT WHEN HOT.**

The unit should receive regular cleaning on, under, and around the stove to prevent the buildup of dust and lint. The exterior surfaces of the unit can be cleaned using soap, water, and a soft cloth. Do not use abrasive or chemical cleaners and take care not to scratch the glass or enamel finish (if so equipped) when cleaning the unit. The use of chemical wax based cleaners or polishes are not recommended due to the potential for discoloration of the castings, or enamel when the residue of the cleaners or polishes is exposed to heat. Excessive buildup of dust, spider webs, or room air contamination may cause odors when the stove is hot.

### Monthly (or as needed):

#### Glass Cleaning

As fuel gas may contain some impurities; it will be necessary to clean the inside of the glass occasionally. Do not use abrasive cleaners. Scratching the glass will weaken the integrity of the glass. **Do not clean the glass when hot!** Allow the glass to cool and apply a mild window cleaning fluid. Special gas appliance window cleaner is available from your local Hearthstone dealer.

**⚠ WARNING: DO NOT OPERATE THIS APPLIANCE WITH THE GLASS PANEL REMOVED, CRACKED,**

**OR BROKEN. DO NOT SUBJECT THE GLASS OR ITS FRAME TO ABUSE, SUCH AS STRIKING OR BENDING. REPLACEMENT OF THE GLASS PANEL SHOULD BE DONE BY A LICENSED OR QUALIFIED SERVICE PERSON. REPLACE WITH MANUFACTURER-APPROVED FRONT GLASS ONLY. NE PAS UTILISER L'APPAREIL SI LE PANNEAU FRONTAL EN VERRE N'EST PAS EN PLACE, EST CRAQUÉ OU BRISÉ. CONFIEZ LE REMPLACEMENT DU PANNEAU À UN TECHNICIEN AGRÉÉ.**

**NOTE:** If the venting system is disassembled for any reason, re-install per the instructions provided in the venting section of this manual.

## Annually:

### Clean Firebox, Pilot, & Burner Assembly

The firebox requires periodic cleaning to prevent the accumulation of dust, lint, and other debris. To clean the firebox, set the switch to the "OFF" position, and turn off the gas supply to the valve. When the unit is cool, remove the front panel and glass (see page 9 for Firebox Access instructions) and carefully remove the decorative ceramic log set, taking care not to damage the logs or chip the enamel cast iron. Remove all ember material. Clean the firebox baffle, burner, and carefully vacuum the entire surface of the log set with a soft brush attachment. Thoroughly vacuum the ports (holes) along the top of the burner, and the pilot assembly.

With the decorative ceramic logs out of the firebox, reseal the firebox and briefly light the unit according to the lighting instructions described on page 21. Check to ensure a proper flame is burning from each burner port. The pilot flame should be burning properly as shown in *figure 22*.

**NOTE:** Do not operate the unit for more than 1-2 minutes without the log set in place.

Check and clean any burner ports that are not burning, or not burning properly. Clean burner ports using a soft brush or vacuum cleaner. If the pilot flame height needs adjustment, it should be adjusted by qualified service personnel as described on page 22.

Complete the cleaning procedure by carefully placing the log set within the firebox as described on pages 26-28. Reattach the glass and front panel to seal the firebox. Turn on the gas, light the unit and check for proper operation. Flame patterns should look similar to the flames in Figure 34. Regularly check to ensure the area around the Champlain is kept free from combustible materials, gasoline, and other flammable vapors and liquids. Check that the

flow of combustion and ventilation air is not obstructed.

## Battery Replacement

**WARNING: DISCONNECT POWER TO THE UNIT AND SHUT OFF THE GAS SUPPLY TO THE VALVE BEFORE REPLACING ANY BATTERIES.**

Hearthstone recommends replacing all batteries at least every season. Keep a supply of good quality rechargeable batteries on hand to ensure functionality during power outages, and to give the environment a break.

### Remote Transmitter Battery Replacement

You can easily change the Remote Transmitter batteries by accessing the rear cover plate. Ensure you orient the batteries correctly as indicated in the battery compartment.

### Receiver Battery Replacement

1. Turn the stove OFF.
2. Remove the valve access cover and set on a non-marring surface.
3. Remove the receiver from the appliance and remove the receiver's battery compartment cover.
4. Install four new AA batteries. Ensure that you orient the batteries correctly as indicated on the battery compartment cover.
5. Slide the cover plate back onto the battery compartment and reinstall the receiver in the appliance.
6. Replace the access panel.

### Initializing the Remote Control

You should not be required to synchronize communication between the Receiver and the Remote Control transmitter when you change the batteries in either. If the system does not respond to commands issued from the remote after changing batteries, follow the sequence for synchronizing the remote and transmitter described on page 31.

### Professional Inspection

Installation and repair should be done by a qualified service person. The appliance should be inspected before use and at least annually by a qualified service person. More frequent cleaning may be required due to excessive lint from carpeting,



bedding material, etc. It is imperative that control compartments, burners and circulating air passageways of the appliance be kept clean. *L'installation et la réparation devrait être confiées à un technicien qualifié. L'appareil devrait faire l'objet d'une inspection par un technicien professionnel avant d'être utilisé et au moins une fois l'an par la suite. Des nettoyages plus fréquents peuvent être nécessaires si les tapis, la literie, et cetera produisent une quantité importante de poussière. Il est essentiel que les compartiments abritant les commandes, les brûleurs et les conduits de circulation d'air de l'appareil soient tenus propres.*

## As Needed:

### Glass and Gasket Replacement

In the event that you need to repair or replace a cracked or broken glass, order kit 93-58015 (complete glass assembly with frame) and use the following instructions to replace the components. Your Champlain uses a folded flat fiberglass gasket to make a tight seal between the glass frame and the firebox. In time, the gasket can become brittle and compressed and should be replaced using the following instructions. New gasket material is also available from your Authorized Hearthstone Dealer. Protect your hands with work gloves, and wash up later.

1. Allow the Champlain to cool completely. If the glass is severely broken, first pull the broken fragments of glass away from the firebox using heavy-duty gloves.
2. Follow the instructions for removing the front glass described in Firebox Access on page 9. Remove the glass from the glass frame by drilling out the four 1/8" rivets that lock the glass in place. Pull the glass away from the frame and set it aside.


#### If replacing gasket only:

1. Remove the existing gasket from the glass by grasping one end and pulling firmly. Clean off as much of the hanging fiber "hairs" as possible
2. Locate the 3/4" x 1/16" flat tape gasket. Peel the adhesive protecting paper away from one end. Starting at the center of the long end of the glass apply the gasket centered on the edge of the glass. Continue to wrap the gasket around the edge until you meet at the starting point. Do not overlap the gasket ends or leave ends with ragged edges.

3. Firmly and evenly, fold the gasket around the edges of the glass so it lies flat on the surface.
4. Place the gasket back in the glass frame. With four new 1/8" rivets replace the 2 glass clips. The glass and frame are now ready to be placed back on the unit.

#### If replacing entire glass with kit:

1. Apply gasket to new glass as describe in steps 2-3 above.
2. Carefully install the new glass with frame onto the firebox and fasten in place using the swing clips .
3. Replace the cast iron by reversing the steps used for removal.

 **WARNING! DO NOT USE SUBSTITUTE MATERIALS. USE ONLY PARTS SUPPLIED BY HEARTHSTONE THROUGH AN AUTHORIZED HEARTHSTONE DEALER.**

 **CAUTION! DO NOT CLEAN THE GLASS WHILE THE UNIT IS HOT.**

## Venting Components:

Venting should not need to be disassembled for normal cleaning. However, if venting is required to be removed for any reason, this should be done by a qualified service person only. It is imperative that the venting system be reinstalled according to the particular manufacturer's specifications and this is best performed by a professional.

### Venting System Inspection

Periodic inspection of the venting system should be performed by a qualified service person or agency at least annually.

## PARTS LIST

<b>PART #</b>	<b>DESCRIPTION</b>	<b>PART #</b>	<b>DESCRIPTION</b>
2310-020	BRICK PANEL FRONT	5302-050	HEATSHIELD: REAR, RIGHT, CHA/SAN
23X0-040	TOP	5301-060	RESTRICTOR PLATE ASSEMBLY
23X0-440	FRONT	5301-070	SHUTTLE POSITION INDICATOR
2310-850	HEAT EXCHANGER BASE	5301-080	OUTLET RESTRICTOR CLIP
2310-860	HEAT EXCHANGER	5701-925H	STARTER COLLAR
2310-240	EXHAUST BAFFLE	7000-027	THERMOCOUPLE INTERRUPTER
3030-036	GLASS	7000-360	REMOTE CONTROL
3160-080	GLASS TAPE 3/4"	7000-381	CONTROL BOARD
3160-150	FIREBOX/AIR HEAT EXCHANGER GASKET	7200-351	ORIFICE: BURNER, LP, #51 SPUD
3160-152	PILOT GASKET	7211-332	PILOT ASSEMBLY
3160-157	GASKET 6"	7211-308	VALVE (NG)
3160-300	PRIMARY AIR CONTROL GASKET	7211-017	GAS LINE 3/8 DIAMETER
3170-150	PLATINUM BRIGHT EMBERS	7211-221	BURNER ASSEMBLY
5301-060	RESTRICTOR PLATE	7211-517	EMBERS: PYROTEK, 4 OZ.
5302-010	FIREBOX: CHA/SAN	<b>Log Set: 93-66020</b>	
5301-030	CONTROL: PRIMARY AIR ASSEMBLY	7211-601	BOTTOM RIGHT LOG
5302-040	HEATSHIELD: REAR, LEFT, CHA/SAN	7211-602	REAR RIGHT LOG
		7211-603	FRONT CENTER LOG
		7211-604	BOTTOM LEFT LOG
		7211-605	REAR TOP LOG
		7211-606	FRONT TOP LOG

### Accessories available:

BLOWER KIT #93-57020

LP CONVERSION KIT #93-56021

NG CONVERSION KIT #93-56020

 **WARNING! DO NOT SUBSTITUTE MATERIALS.**

For replacement parts, or for information about parts or service, contact your authorized Hearthstone retailer. For the name of the authorized retailer nearest to you, visit our website at [www.hearthstonestoves.com](http://www.hearthstonestoves.com).

## TROUBLESHOOTING

Symptom	Possible Cause	Corrective Action
1. Pilot will not light.	<p>A. Power supply not plugged in and/or batteries are dead.</p> <p>B. Insufficient gas pressure, air in the pilot line, or dirty or kinked gas line.</p> <p>C. Pilot orifice plugged.</p> <p>D. Defective or misaligned igniter element in pilot assembly.</p> <p>E. Defective ignitor.</p> <p>F. After sitting for "off" season (summer), pilot assembly may be dirty.</p> <p>G. ON/OFF Switch in "OFF".</p>	<p>A. Ensure power supply is plugged in and receiving 120V AC. Ensure power supply output is 6V DC. Replace all batteries with known good batteries.</p> <p>B. Allow time for system to purge air in line. Check the inlet gas pressure. Make sure it is within the Min/Max. allowable pressures.</p> <p>C. Clean or replace the pilot assembly.</p> <p>D. If a flame lights the pilot, check the electrode gap and location. The gap should be 1/8" in the flame area.</p> <p>E. Check for a good connection between ignitor and electrode. Check wire insulation. If everything is properly connected and still no spark, replace the DFC Ignition Module.</p> <p>F. Clean or replace the pilot assembly.</p> <p>G. Turn switch to 'ON' position.</p>
2. Pilot in Manual or Standby mode and will not stay lit after carefully following lighting instructions.	<p>A. Low or too high gas pressure</p> <p>B. Faulty connections.</p> <p>C. Pilot dirty or plugged.</p> <p>D. Thermocouple damaged.</p> <p>E. Thermocouple Interrupter circuit damaged.</p>	<p>A. Check for proper inlet pressure for the fuel gas in use.</p> <p>B. Check connections on the valve.</p> <p>C. Clean or replace the pilot assembly.</p> <p>D. Check for appropriate MV at thermocouple interrupter.</p> <p>E. Check thermocouple interrupter circuit for damage or loose connections.</p>
3. Pilot burning, no gas to main burner.	<p>A. Gas control system may be damaged.</p> <p>B. No power and/or batteries may be dead.</p> <p>C. Plugged burner orifice.</p>	<p>A. Check wiring for proper connections. Check components for proper operation. Check for appropriate MV output from thermocouple and check connections at thermocouple interrupter.</p> <p>B. Restore 120V service or replace batteries in receiver.</p> <p>C. Remove and check burner orifice - clean or replace. Note: do not use any metal cleaning device, as this may damage the orifice.</p>
4. Pilot and burner come on, but go out after some warm-up.	<p>A. Inconsistent draft.</p> <p>B. Insufficient gas pressure.</p> <p>C. Excessive draft.</p>	<p>A. Check flue for blockage or other damage to venting.</p> <p>B. Check line pressure to ensure that the correct inlet pressure is present for the type of gas being used. If propane pressure is inconsistent, check for water condensation at the regulator.</p> <p>C. Check Restriction settings per this manual.</p>

Symptom	Possible Cause	Corrective Action
5. Frequent pilot outage.	A. Pilot flame may be too low or blowing, (high), causing the pilot safety to drop out. B. Excessive draft	A. Clean and/or adjust the pilot flame for maximum impingement on the thermocouple. B. Check Restriction settings per this manual.
6. Glass fogs	A. A normal result of gas combustion in a cold stove.	A1. After the heater has warmed up, the glass should clear. A2. Leave pilot in standby mode to keep stove warmer.
7. Blue Flames	A. A normal result during the first 20 minutes.	A. Flames should begin to turn more yellowish after 20 minutes of burning. B. If the blue color stays; adjust the air shutter for a proper burn.
8. Floating flames, lazy ill-defined, quiet flames, which roll around, sometimes completely off of the port, sometimes with overly, yellow tips. Possible sooting. Usually accompanied by the odor of aldehydes.	A. Potentially dangerous incomplete combustion due to incorrect air to fuel ratio (lack of combustion air or excessive fuel delivery i.e. excessive gas pressure, overrating of appliance). B. Incorrect air intake/exhaust flow system. Causes maybe: B1. Blocked burner. B2. Blocked primary air B3. Blocked secondary air inlets C. Incorrect air shutter position.	A. Check the appliance input rate and reduce if necessary. The air intake/exhaust flow system may be too restrictive or blocked (the rate at which the exhaust leaves [draft] determines the rate at which the combustion air is delivered). Poor draft results in insufficient air delivery or a restricted exhaust. Correct air intake/exhaust flow system. B1. Clear ports. B2. Clear obstructions. B3. Clear obstructions. C. If gas pressures are correct and the flames stay the same, adjust the air shutter for a proper burn.
9. Burner flashback. Air-gas mixture ignites inside the burner near the orifice, usually creating a roaring noise like a blowtorch. The problem is an imbalance of gas flow velocity and burning speed pattern.	A. Excessive primary air. B. Burner input underrated. C. Valve leak if flashback occurs with burner valve in off position. D. Improper gas pipe size.	A. Adjust the air shutter for a proper burn. B. Check input rate. Check input pressure using a manometer. Confirm correct gas pressure at house meter or tank (call gas company). Confirm burner orifice size. C. Replace valve. If above corrections do not eliminate flashback, replace burner. D. Correct plumbing.
10. Delayed ignition (makes a sudden "whoosh" noise as the burner lights). This is a buildup of gas prior to ignition. This is more prevalent with propane (LP) fuel.	A. Incorrect air-to-fuel ratio. A1. Primary air incorrect. A2. Burner ports plugged. B. Improper log placement. C. Pilot shield not installed properly.	A1. Adjust the air shutter for a proper burn. A2. Open ports to allow for proper travel of flames. B. Reposition logs to eliminate interference with flame travel. C. Ensure the pilot shield is installed in the proper position.

# RATING LABEL

MODEL / MODELE #: 8302  
 MODEL NAME: CHAMPLAIN  
 SERIAL #:   
 NUMERO DE SERIE:   
 LISTED: VENTED GAS FIREPLACE HEATER  
 CERTIFIED TO: ANSI Z21.88 / CSA 2.33-2016, CSA 2.17-2017

CERTIFIED FOR CANADA  
 CERTIFIED FOR MOBILE HOME  
 INSTALLATION  
 Refer to the Intertek  
 Directory of Building Products  
 (<https://bpdirectory.intertek.com>)  
 for detailed information.



FUEL TYPE:	NG:	LP:
INPUT RATING (Btu/hr) 0-2000 ft	35,000	35,000
INPUT RATING (Btu/hr) 2000-4500 ft	35,000	35,000
ORIFICE SIZE (DMS) 0-2000 ft	32	51
ORIFICE SIZE (DMS) 2000-4500 ft	32	51
MANIFOLD PRESSURE - LO SETTING (in.w.c./kPa)	1.2/0.30	4.3/1.07
MANIFOLD PRESSURE - HI SETTING (in.w.c./kPa)	3.4/0.85	10.0/2.49
INLET PRESSURE - MINIMUM (in.w.c./kPa)	5.0/1.25	12.0/2.99
INLET PRESSURE - MAXIMUM (in.w.c./kPa)	11.0/2.74	13.8/3.45
MINIMUM INPUT RATING (Btu/hr)	21,000	22,000
ELECTRICAL RATING: 120 VOLTS 60Hz, 15 A		

**CAUTION:**  
 DO NOT OPERATE WITH  
 GLASS REMOVED,  
 CRACKED OR BROKEN.

FOR USE WITH GLASS DOORS CERTIFIED  
 WITH THE APPLIANCE ONLY.

Replacement on the panel should be done by a licensed or qualified service person.

This appliance must be installed in accordance with local codes, if any; if not, follow the *National Fuel Gas Code, ANSI Z223.1/ NFPA 54*, or *Natural Gas and Propane Installation Codes, CSA B149.1*.

WARNING: Improper installation, adjustment, alteration, service or maintenance can cause injury or property damage. Refer to the owner's information manual provided with this appliance. For assistance or additional information consult a qualified installer, service agency or the gas supplier.

For mobile home installation:

This appliance must be installed in accordance with the *Standard for Mobile Housing, CAN/CSA Z240 MH*, in Canada; or with the *Manufactured Home Construction and Safety Standard, Title 24 CFR, Part 3280*, in the United States or when such standard is not applicable, *Manufactured Home Installation Standard, ANSI/NCSBCS A225.1/NFPA 501A*.

During transportation of the mobile home:

Sections of the venting system have not been installed. WARNING - Do not operate the appliance until all sections have been assembled and installed in accordance with the manufacturer's instructions.

**MINIMUM CLEARANCES TO COMBUSTIBLES**

UNIT TO REAR WALL: 3" (77mm)  
 UNIT TO SIDE WALLS, HORIZONTAL VENT: 2" (51mm)  
 UNIT TO SIDE WALLS, SNORKEL TERMINATION: 4" (102mm)  
 MAXIMUM MANTEL DEPTH: 17" (432mm)  
 HORIZONTAL VENT TO MANTLE: 2" (51mm)  
 SNORKEL TERMINATION, TOP OF UNIT TO MANTLE: 16" (407mm) Minimum

**OPTIONAL ACCESSORIES**

93-57020 BLOWER KIT: CHA 2 (8302)  
 93-56020 FUEL CONVERSION KIT (NG): CHA 2 (8302)  
 93-56021 FUEL CONVERSION KIT (LP): CHA 2 (8302)

This appliance is only for use with the type of gas indicated on this rating plate and may be installed in an aftermarket, permanently located, manufactured (mobile) home where not prohibited by local codes. See owner's manual for details. This appliance is not convertible for use with other gases, unless a certified kit is used. If the vent air intake system is disassembled for any reason, reinstall per the instructions provided with the initial instructions. This vented gas fireplace heater is not for use with air filters. This appliance must be properly connected to a venting system in accordance with the manufacturer's installation instructions.

**VENTED GAS FIREPLACE HEATER - NOT FOR USE WITH SOLID FUEL**

MANUFACTURED BY: HearthStone QHHP, Inc., MORRISVILLE, VERMONT 05661



2019 2020 2021 2022 JAN FEB MAR APR MAY JUN JUL AUG SEP OCT NOV DEC



DO NOT REMOVE OR COVER THIS LABEL

Made in USA

3300-253

## Limited Warranty

**These warranties give you specific legal rights. You may also have other rights which vary from State to State.**

Hearthstone Quality Home Heating Products, Inc. (Hearthstone) warrants to the original retail purchaser only (the "Original Purchaser") the new appliance manufactured by Hearthstone, purchased by the Original Purchaser and installed by an authorized Hearthstone dealer or their designated representative against any of the occurrences listed in this document that result from defects in material or workmanship. This warranty is not transferrable. All obligations of Hearthstone under this document commence on the date of the Original Invoice (the "Purchase Date"). The term "Limited Lifetime" is defined as 10 years from the beginning of warranty coverage.

Hearthstone appliances are designed to be operated only with the fuels listed in your owner's manual.

Warranty Period	Wood	Gas	Pellet	Covered Components
Limited Lifetime	X	X	X	Stone
	X	X	X	Cast iron not listed elsewhere
	X			Clean burning air supply system*
5 Year	X	X	X	Door handles and latches
	X	X	X	Steel Components and Firebox
		X		Burner and logs
3 Year			X	Burn Pot and Baffles
2 Year	X	X	X	Appliance Electrical and Gas Components
	X	X		Refractory, Vermiculite Panels, Baffles
1 Year	X	X	X	Enamel finish against peeling or fading
	X	X	X	Accessories
	X	X	X	Glass
	X			Ash Grate
	X	X	X	All components not listed elsewhere

Any parts repaired or replaced during the limited warranty period will be warranted under the terms of the limited warranty for a period not to exceed the remaining term of the original limited warranty or one year, whichever is longer.

**Parts:** Hearthstone will replace through an authorized dealer, defective parts covered by the foregoing warranty at no charge.

**Labor:** Within the first (1<sup>st</sup>) year after the Purchase Date, Hearthstone will pay for warranty labor performed by an authorized Dealer at Hearthstone's published labor rates in effect at the time the labor is performed only if the appliance is installed by an authorized dealer or their designated representative. Otherwise or thereafter, the Original Purchaser is responsible for the cost of labor.

**Shipping cost for parts:** Within the first ninety (90) days after the Purchase Date, Hearthstone will pay for the shipping of appliance parts covered by any of the foregoing warranties to and from Hearthstone or an authorized Dealer, as the case may be. Thereafter, the Original Purchaser is responsible for all shipping costs related to shipping appliance parts to and from Hearthstone or an authorized Dealer, as the case may be.

**Shipping cost for the appliance:** Within the first (1<sup>st</sup>) year after the Purchase Date, if the Original Purchaser is instructed to return the appliance to Hearthstone or an authorized Dealer for repair, Hearthstone will pay fifty percent (50%) and the Original Purchaser will pay fifty percent (50%) of the shipping costs related to shipping the appliance to and from Hearthstone or an authorized Dealer, as the case may be. Thereafter, the Original

Purchaser is responsible for one hundred percent (100%) of all of the shipping costs related to shipping the appliance to and from Hearthstone or an authorized Dealer, as the case may be. Notwithstanding any other provision of this document, in no event will Hearthstone pay for any Dealer fees or other fees for pick up or delivery of the appliance returned for repair; the Original Purchaser shall be responsible for any such fees.

### **EXCLUSIONS & CONDITIONS**

The warranties contained in this document do not cover, nor is Hearthstone responsible for:

1. Damages resulting from:
  - a. Failure to install, operate, or maintain the appliance in accordance with the owner's manual, operating instructions, installation instructions, or safety rating label provided with the appliance.
  - b. Over-firing the appliance. Over-firing can be identified by, but not limited to, warped cast iron or steel, rust colored cast iron, bubbling, cracking and discoloration of steel or enamel finishes.
  - c. Failure to install the appliance in accordance with all national or local building codes.
  - d. Shipping or improper handling.
  - e. Improper operation, abuse, misuse, continued operation with damaged, corroded, or failed components, accident, or improper/incorrect service or repairs.
  - f. Environmental conditions, inadequate ventilation, negative pressure, or improper drafting caused by tightly sealed constructions, insufficient make-up air supply, or air handling devices such as exhaust fans, forced air furnaces, or other such causes.
  - g. Damage caused by direct exposure to water.
  - h. Use of fuels other than those specified in the owner's manual.
  - i. Installation or use of components not supplied with the appliance, or any other components not expressly authorized and approved by Hearthstone.
  - J. Modifications of the appliance not expressly authorized and approved by Hearthstone in writing
  - K. Interruptions or fluctuations of electrical power supplied to the appliance.
2. All stones are warranted against cracking or breakage due to thermal stress, excluding surface and hairline cracks and scratches that do not affect the operation, or safety of the appliance.
3. Repair or replacement of wear parts. Such parts that are subject to normal wear and tear during the warranty period such as paint, gaskets, baffles, refractory materials, ash grates, and glass.
4. Damage resulting from installation, modification, alteration, repair or service of the appliance by any party other than an authorized Hearthstone dealer (a "Dealer") or their designated representative, or Hearthstone.
5. Damage due to water or condensation due to installation of the appliance in a high moisture area.
6. Damage due to installation of the appliance in an atmosphere contaminated by damaging chemicals, including but not limited to chlorine, fluorine or salts.
7. Scratches on glass, enameled surfaces or stones due to mechanical abrasion.
8. Noise caused by expansion or contraction caused by the heating and cooling of the appliance.
9. Odors caused by the heating of the appliance, or surrounding materials
10. Consequential damage caused by leaking of condensate during startup
11. A defect in any part of the appliance if the Original Purchaser fails to comply with Hearthstone's or a Dealer's request to ship the part or the appliance to Hearthstone or a Dealer, as the case may be.
12. Replacement stones and enameled parts are taken from current stock, and may not match originals in color, grain, or pattern. Hearthstone will supply replacement parts for discontinued parts in finishes or colors as available, or at their discretion.
13. Hearthstone's obligation under this warranty does not extend to the appliance's ability to heat the desired space. Information is provided to assist the customer and the dealer in selecting the appropriate appliance for the application. Consideration must be given to appliance location and configuration, environmental conditions, insulation and air tightness of the structure.

THE WARRANTIES CONTAINED IN THIS DOCUMENT ARE EXCLUSIVE AND ARE GIVEN BY HEARTHSTONE AND ACCEPTED BY THE ORIGINAL PURCHASER IN LIEU OF ALL OTHER EXPRESS WARRANTIES AND ANY OBLIGATIONS, LIABILITIES, RIGHTS, CLAIMS, OR REMEDIES IN CONTRACT OR TORT, WHETHER OR NOT ARISING FROM HEARTHSTONE'S NEGLIGENCE, ACTUAL OR IMPUTED. ALL IMPLIED WARRANTIES, INCLUDING THE WARRANTIES OF MERCHANTABILITY AND FITNESS FOR A PARTICULAR PURPOSE, ARE GIVEN ONLY TO THE EXTENT REQUIRED BY FEDERAL OR STATE LAW. EXCEPT AS OTHERWISE REQUIRED BY STATE LAW, UPON THE EXPIRATION OF THE EXPRESS LIMITED WARRANTIES CONTAINED HEREIN, NO IMPLIED WARRANTIES, INCLUDING THE IMPLIED WARRANTIES OF MERCHANTABILITY OR FITNESS FOR A PARTICULAR PURPOSE, SHALL APPLY TO

THE SUBJECT APPLIANCE. SOME STATES DO NOT ALLOW LIMITATIONS ON HOW LONG AN IMPLIED WARRANTY LASTS, SO THE ABOVE LIMITATION MAY NOT APPLY TO YOU.

THE WARRANTIES CONTAINED IN THIS DOCUMENT EXTEND ONLY TO THE ORIGINAL PURCHASER OF THE APPLIANCE WARRANTED HEREUNDER. THEY ARE NOT TRANSFERRABLE AND DO NOT EXTEND TO ANY SUBSEQUENT OWNERS.

UNDER NO CIRCUMSTANCES SHALL HEARTHSTONE BE LIABLE TO THE ORIGINAL PURCHASER OR ANY OTHER PERSON FOR ANY INCIDENTAL OR CONSEQUENTIAL DAMAGES, INCLUDING BUT NOT LIMITED TO DAMAGE TO PROPERTY OR PERSONAL INJURIES, WHETHER ARISING OUT OF LOSS OF USE, BREACH OF WARRANTY, TORT, OR OTHERWISE, EVEN IF HEARTHSTONE HAS BEEN APPRAISED OF THE POSSIBILITY OF SUCH DAMAGES. SOME STATES DO NOT ALLOW THE EXCLUSION OR LIMITATION OF INCIDENTAL OR CONSEQUENTIAL DAMAGES, SO THE ABOVE LIMITATION OR EXCLUSION MAY NOT APPLY TO YOU.

### **QUALIFYING FOR WARRANTY COVERAGE**

To obtain performance of any obligation under this document, the Original Purchaser must, within the applicable warranty time period, contact their original Hearthstone dealer, or the current responsible local Hearthstone dealer, for instructions regarding the return of defective parts for repair, the return of the appliance for repair, or to schedule a Dealer service call. The Original Purchaser should refer to the Dealer Network search engine contained on Hearthstone's Web site ([www.hearthstonestoves.com](http://www.hearthstonestoves.com)) if the original dealer is not available, to find a Hearthstone dealer nearest to the Original Purchaser's location.

### **REMEDY**

The remedy for any breach of the foregoing warranties will consist of repair or replacement, at Hearthstone's option, of any covered defect in the appliance. When the Original Purchaser contacts a Hearthstone Dealer, the Dealer on behalf of Hearthstone, as the case may be, will instruct the Original Purchaser to either return the defective part, or the entire appliance (if requested), to the Dealer or Hearthstone or allow a Dealer to make a service call at the place where the appliance is located. Hearthstone may require that a digital picture be provided to support the claim. Notwithstanding any other provision of this document, the Original Purchaser shall pay for any fees and service charges related to a Dealer's service call or the shipping charges associated with the return.

### **WARRANTY REGISTRATION**

The Original Purchaser can complete their warranty registration on our website at [www.hearthstonestoves.com](http://www.hearthstonestoves.com).  
Hearthstone's physical address is:

Hearthstone Quality Home Heating Products, Inc.  
Warranty Department  
317 Stafford Avenue  
Morrisville, VT 05661

**NOTE: ON-LINE REGISTRATION IS *NOT REQUIRED* AS A CONDITION OF WARRANTY COVERAGE OR HEARTHSTONE'S PERFORMANCE.**